

Geschäftsmodell Biobank

Welche Marktkräfte konkurrieren und können wir langfristig finanzieren ?

Dr. Rainer Warth, MBA
www.biobank-suisse.ch

Aktivitäten seit 2006



- **Kollaboration (National und International)**
 - **2007** Zentraler Server (Forscher könne nach biologischen Material aus CH-biobanken)
 - **2008** Schweizer Biobank Register
 - **2010** International Zusammenarbeit mit CRIP
 - **4.** Swiss BIG (Workshop for Swiss biobanks)
- **Harmonisierung**
 - **2009, 2013** Patienteneinwilligung und Information (SAMW und BAG)
 - **2007** Inter-operational datatbank Software (CAISIS)
- **Studien**
 - **2007** Multi-centric biobank study in Switzerland(Mamma-Ca)
 - **2009** RNA study mit 4 biobanken.
 - **2010** Prostate Study
- **Anfragen**
 - **2013** National Agenturen (BAG, SAMW, Universitäten)
 - International (FP7, BBMRI, ISBER, etc.)

Search ...



About us

[Foundation board](#)

[Administration](#)

[FDPIC comment](#)

[Legal Notice](#)

Find biospecimens

[Partner Biobanks](#)

Support

[Researcher](#)

[Biobank Manager](#)

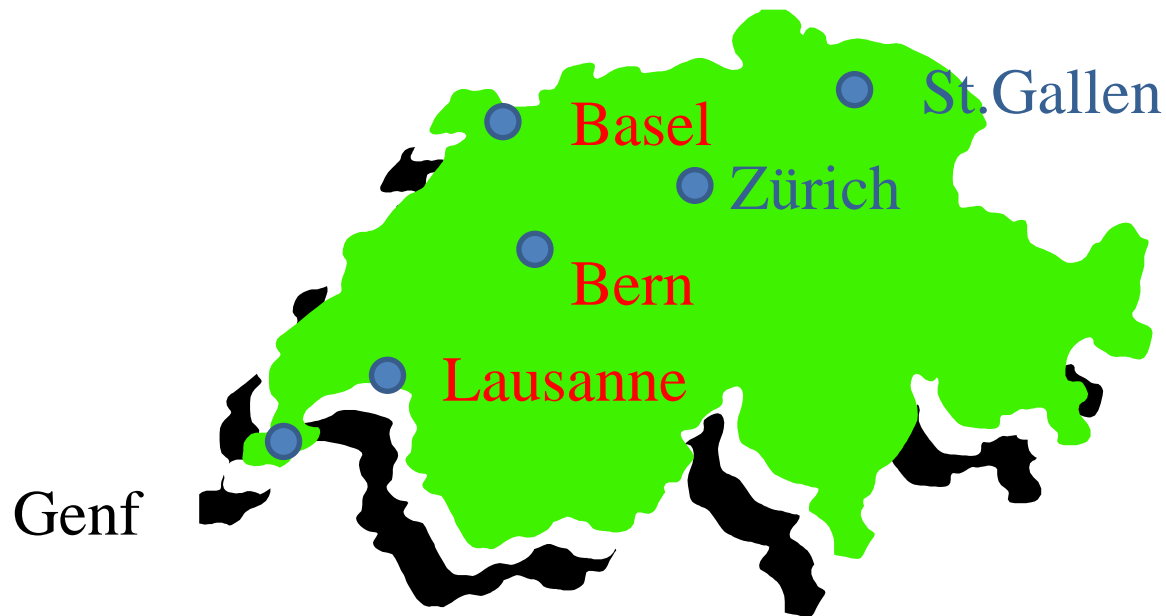
[Biobank Registry](#)

[Contact](#)

Foundation board

President		
Perren, Aurel	MD, Professor	Institute of Pathology University of Bern Bern
Members		
De Leval, Laurence	MD, Professor	Institut universitaire de pat Université de Lausanne Lausanne
Tolnay, Markus	MD, Professor	Institute for Pathology University Hospital Basel Basel
Nosedà, Giorgio	MD, Professor	President of National Instit Zürich
Obrist, Reto	MD, Professor, MHA	Swissmedic Agency Council Bern
Probst-Hensch, Nicole	PhD, Professor, MPH	Swiss Tropical and Public H Basel
Metzger, Urs	MD, Professor	Swiss Academy of Medical S Basel
Von Moos, Roger	MD, PD	Medical Oncology Kantonsspital Graubünden Chur Vice President SAKK

Biobank-suisse network



- Specimen info
- IT infrastructure

BBS database

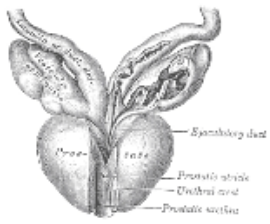


Patients by age
(end of 2012)

	<i>Patients</i>	<i>Specimens</i>
<i>Patients 40 or older</i>	19922	65494
<i>Patients younger than 40</i>	4091	13761
<i>Patients younger than 16</i>	666	1651
<i>Total</i>	24013	79255

Specimens from selected
cancer

	<i>FF</i>		<i>FFPE</i>		<i>FF+RNAI</i> <i>latter</i>	
	<i>Patients</i>	<i>Specimens</i>	<i>Patients</i>	<i>Specimens</i>	<i>Patients</i>	<i>Specimens</i>
<i>Breast</i>	6030	8616	3688	4306	227	444
<i>Prostate</i>	824	1334	265	265	279	587
<i>Kidney</i>	856	2097	216	1201		
<i>Liver</i>	1559	3410	328	1686		
<i>Ovaries</i>	584	1417	252	951		
<i>Skin</i>	425	1461	274	1249		
<i>Colon</i>	2268	5443	1233	3994		
<i>Brain</i>	162	228	1	2		



Research Query for Prostate Cancer Biospecimens

Help

Patient

Age at diagnosis: From To

Gender:

Pathology

Primary Gleason:

Secondary Gleason:

Node Positive:

Biospecimen

Type:

Subtype:

Storage Type:

Kriterien

The database contains 1155 Biospecimens and 279 Patients.

With the chosen search criteria, your result set will contain:

1134 Biospecimens
275 Patients

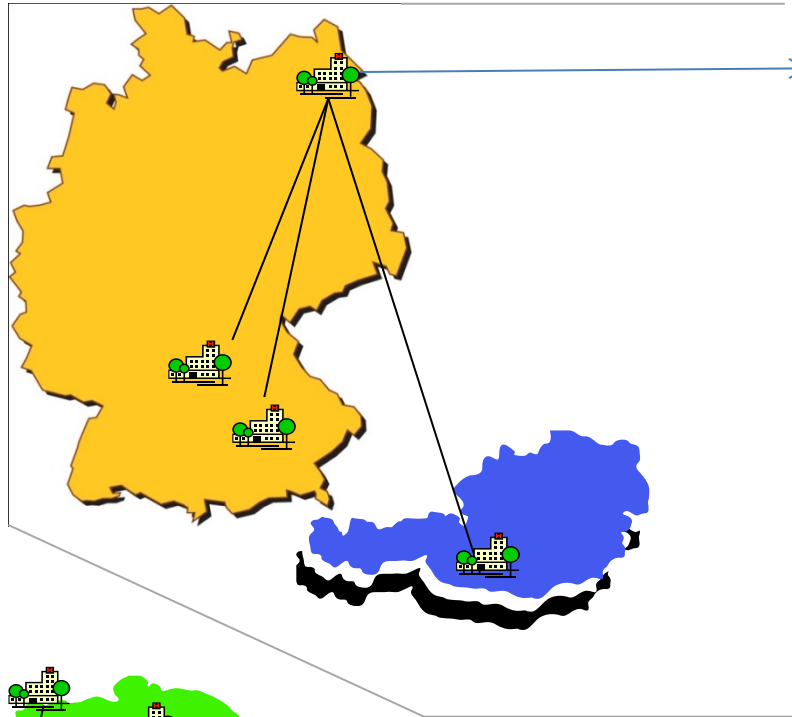
Anzahl

[timed out] **Cases at CRIP** (including only parameters marked with)

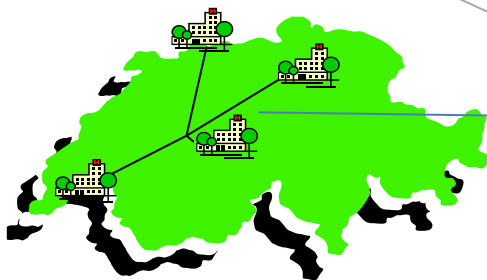
International Cooperation



D



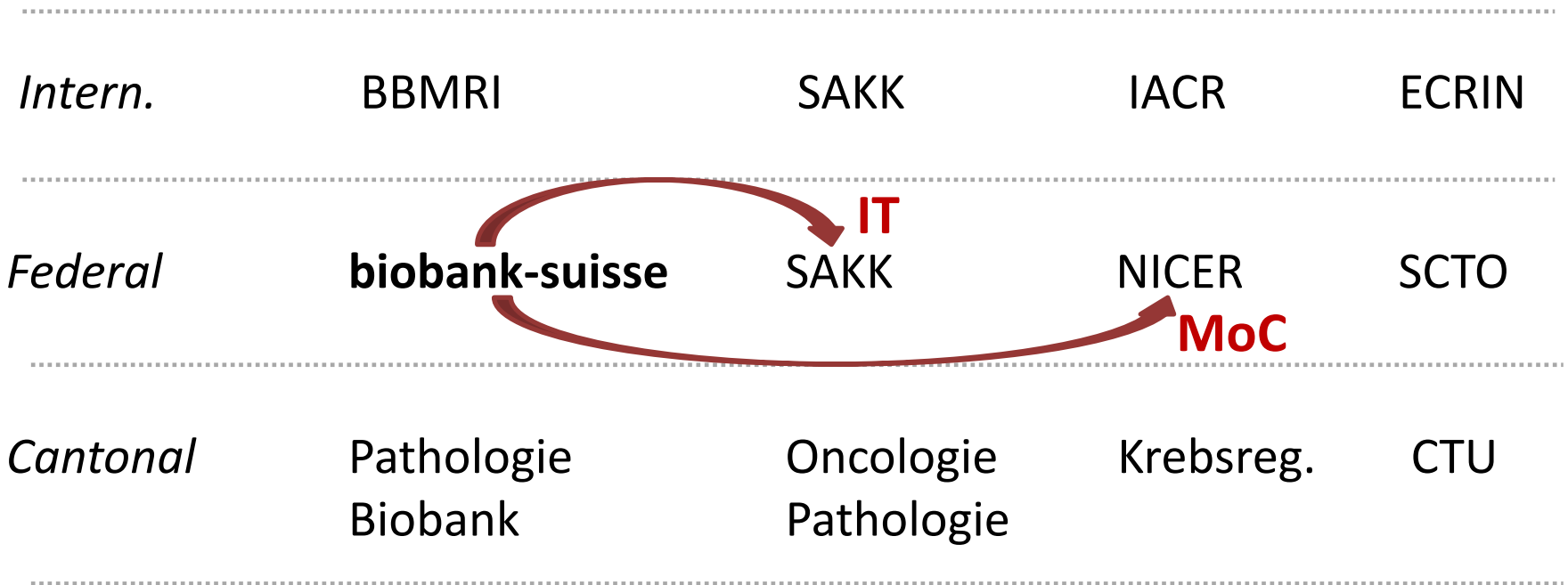
A



CH



National Cooperation



Aktivitäten der Stiftung biobank-suisse seit 2006

Biobanken und Nutzer Klassifizieren

5-Kräfte Modell des Kompetitiven Umfeldes

Eckdaten des Marktes

Business Model Canvas

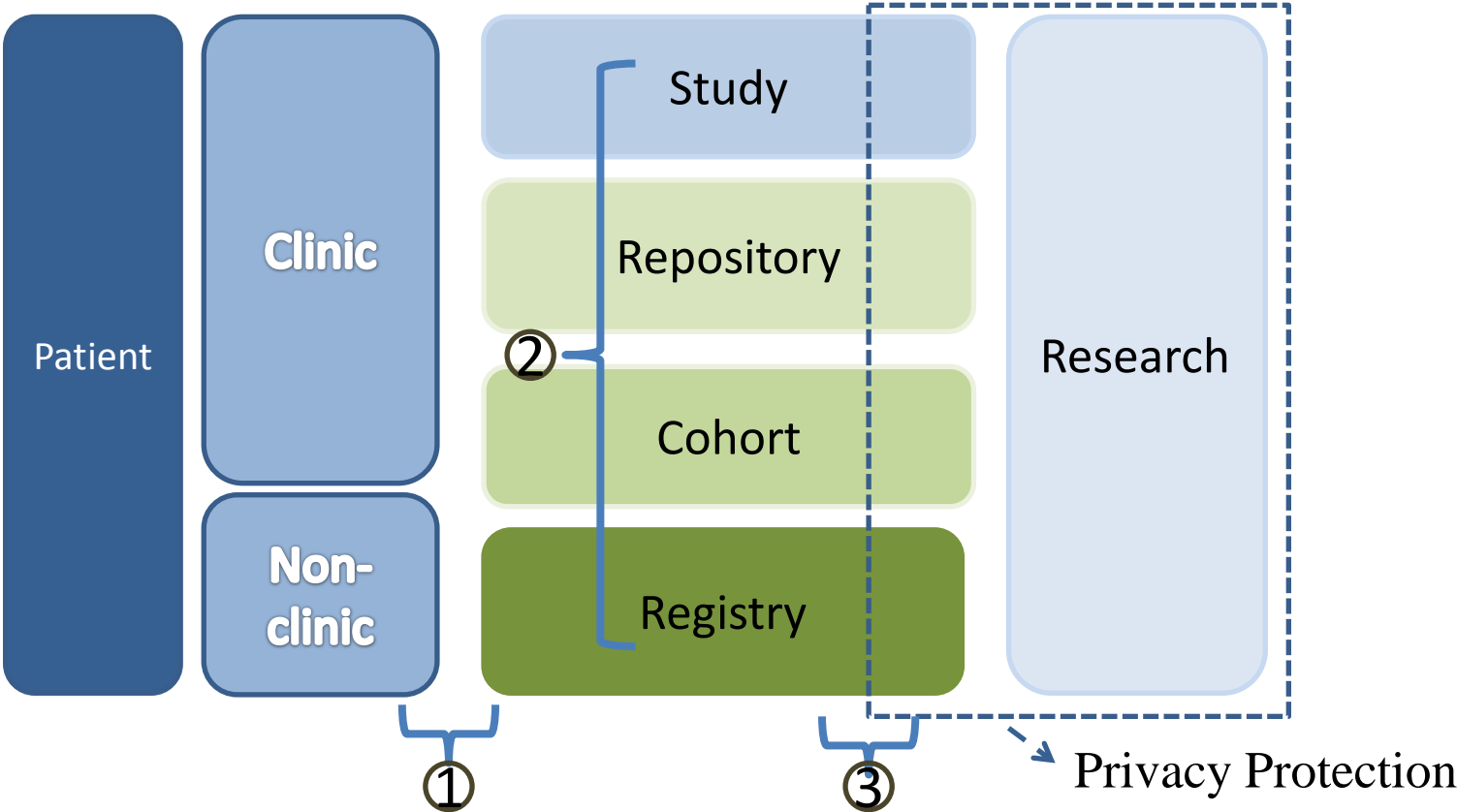
Biobank Klassifizierung



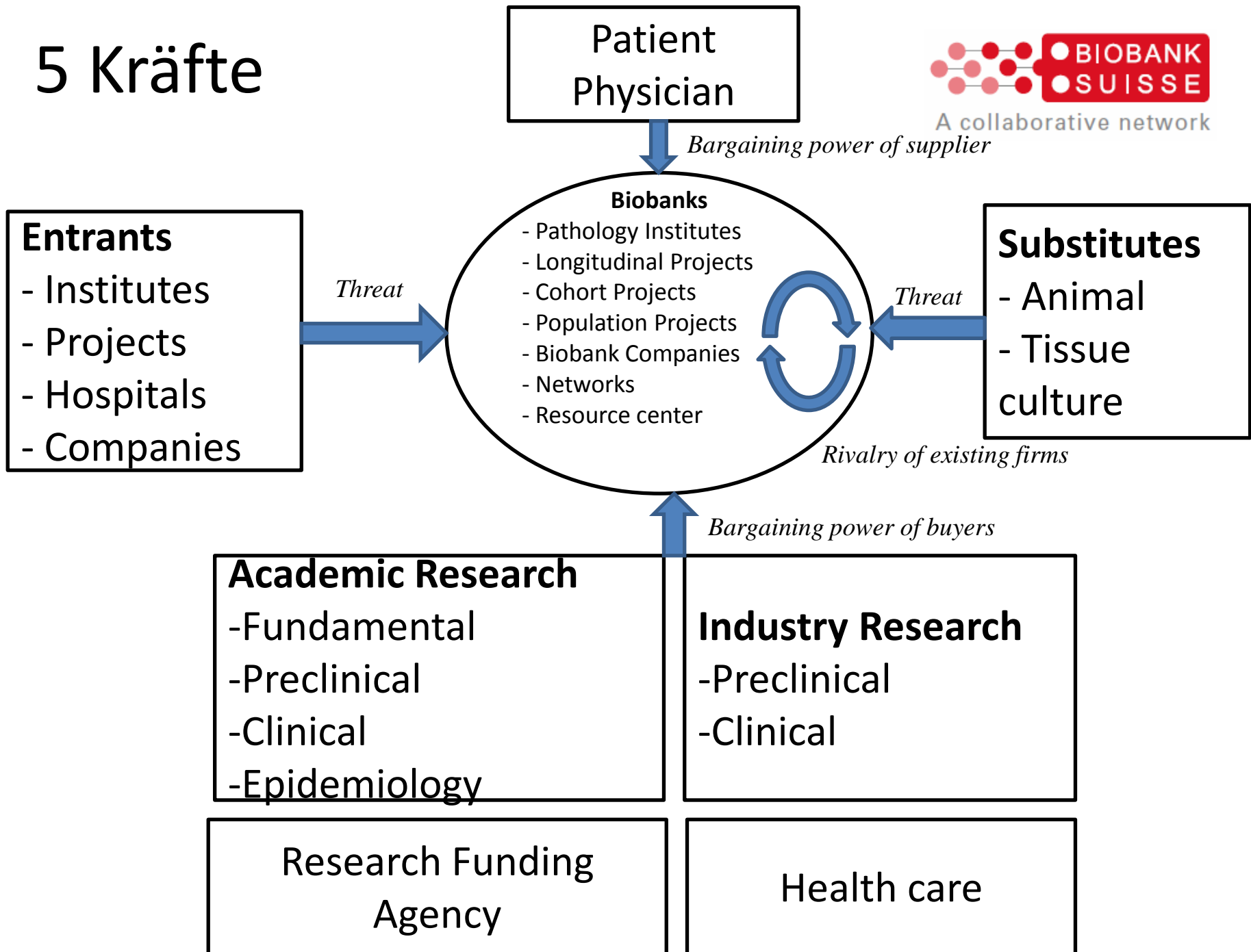
Activity



Patient and Institutions



5 Kräfte



Ausgaben in % des BIP

Science

	2004	2005	2006	2007	2008	2009	2010	2011
AU	2.24	2.46	2.44	2.51	2.67	2.71	2.79	2.75
DE	2.50	2.51	2.54	2.53	2.69	2.82	2.80	2.84
CH	2.82	2.87

Health

	2005	2006	2007	2008	2009	2010	2011	2012
AU	10.4	10.2	10.3	10.5	11.2	11.0	10.8	
DE	10.8	10.6	10.5	10.7	11.8	11.5	11.3	
CH	10.9	10.4	10.2	10.3	11.0	10.9	11.0	11.3

Model: Beitrag

Währung in \$

	Bevölk.	BIP	Ausgaben	Ausgaben	Gebühr	Total
	in Mil.	pro Kopf	Gesundheit	Forschung	pro Kopf	in Mil.
			pro Kopf	pro Kopf	0.10%	
AU	8.4	39'468	4'546	1'066	4.55	38.2
DE	80.3	42'408	4'494	1'145	4.49	361.3
CH	8.0	45'999	5'642	1'242	5.64	45.2

8. KP Key Partnerships

Some activities are outsourced and some resources are acquired outside

Patients
Clinicians

7. KA Key Activities

....by performing a number of Key Activities.

6. KR Key Resources

Key resources are the assets required to offer and deliver the previously described elements...

2. VP Value Propositions

It seeks to solve customer problems and satisfy customer needs with value propositions

- Access to human biomaterial
-- Access to biomedical records for research

4. CR Customer Relationships

Customer relationship are established and maintained with each Customer Segment.

3. CH Channels Value propositions are delivered to customers through communication, distribution, and sales Channels



A collaborative network

1, CS Customer Segments

An organization serves one or several Customer Segments

1. Director of hospital

2. Research group

-Orphan

-Disease

-Basic

3. Enterprise

-Biomarker Stratifikation

9. C\$ Cost Structure

The business model elements result in the cost structure

5. R\$ Revenue Streams

Revenue streams

3 Schlüsse

Kompetitives Umfeld ist günstig

Preisfindung schwierig

5.64 \$ pro Person und Jahr entspricht

0.1 % der Gesundheitsausgaben

45 mio \$ / für CH biobanken

Individuelles Business Modell ist notwendig

Business Modell Canvas

8. KP Key Partnerships

Some activities are outsourced and some resources are acquired outside

7. KA Key Activities

....by performing a number of Key Activities.

6. KR Key Resources

Key resources are the assets required to offer and deliver the previously described elements...

2. VP Value Propositions

It seeks to solve customer problems and satisfy customer needs with value propositions

4. CR Customer Relationships

Customer relationships are established and maintained with each Customer Segment.

3. CH Channels Value propositions

are delivered to customers through communication, distribution, and sales Channels

5. R\$ Revenue Streams

Revenue streams

9. C\$ Cost Structure

The business model elements result in the cost structure



1. CS Customer Segments

An organization serves one or several Customer Segments

Director of hospital

- Research group
- Orphan
- Disease
- Basic

- Enterprise
- Biomarker
- Stratification

A collaborative network

1. CS Customer Segments

An organization serves one or several Customer Segments

2. VP Value Propositions

It seeks to solve customer problems and satisfy customer needs with value propositions

3. CH Channels

Value propositions are delivered to customers through communication, distribution, and sales Channels

4. CR Customer Relationships

Customer relationships are established and maintained with each Customer Segment.

5. R\$ Revenue Streams

Revenue streams

6. KR Key Resources

Key resources are the assets required to offer and deliver the previously described elements...

7. KA Key Activities

....by performing a number of Key Activities.

8. KP Key Partnerships

Some activities are outsourced and some resources are acquired outside

9. C\$ Cost Structure

The business model elements result in the cost structure

Biospecimens Lifecycle

Medical Treatment

Clinical Biobanking

Medical Research



Donor Consent	Medical/Surgical Procedures	Transport	Receiving	Storage	Processing Annotation	Quality	Release, Distribution Transport	Scientific Analysis	Restocking/ Destruction
---------------	-----------------------------	-----------	-----------	---------	--------------------------	---------	---------------------------------------	------------------------	----------------------------

Measure in Minutes

Measure in Years

Pre-acquisition

Acquisition

Post Acquisition

Pre-Release

- Antibiotics
- Other drugs
- Type of anesthesia
- Anesthesia duration
- Arterial clamp time

- Processing Time
- Temperature
- Fixation Agent
- SOP's

- Storage Media
- Storage Method
- Storage Temperature
- Quality Controls
- Pathology Review
- Disease Site
- Clinical Data
- Data Standards
- SOP's

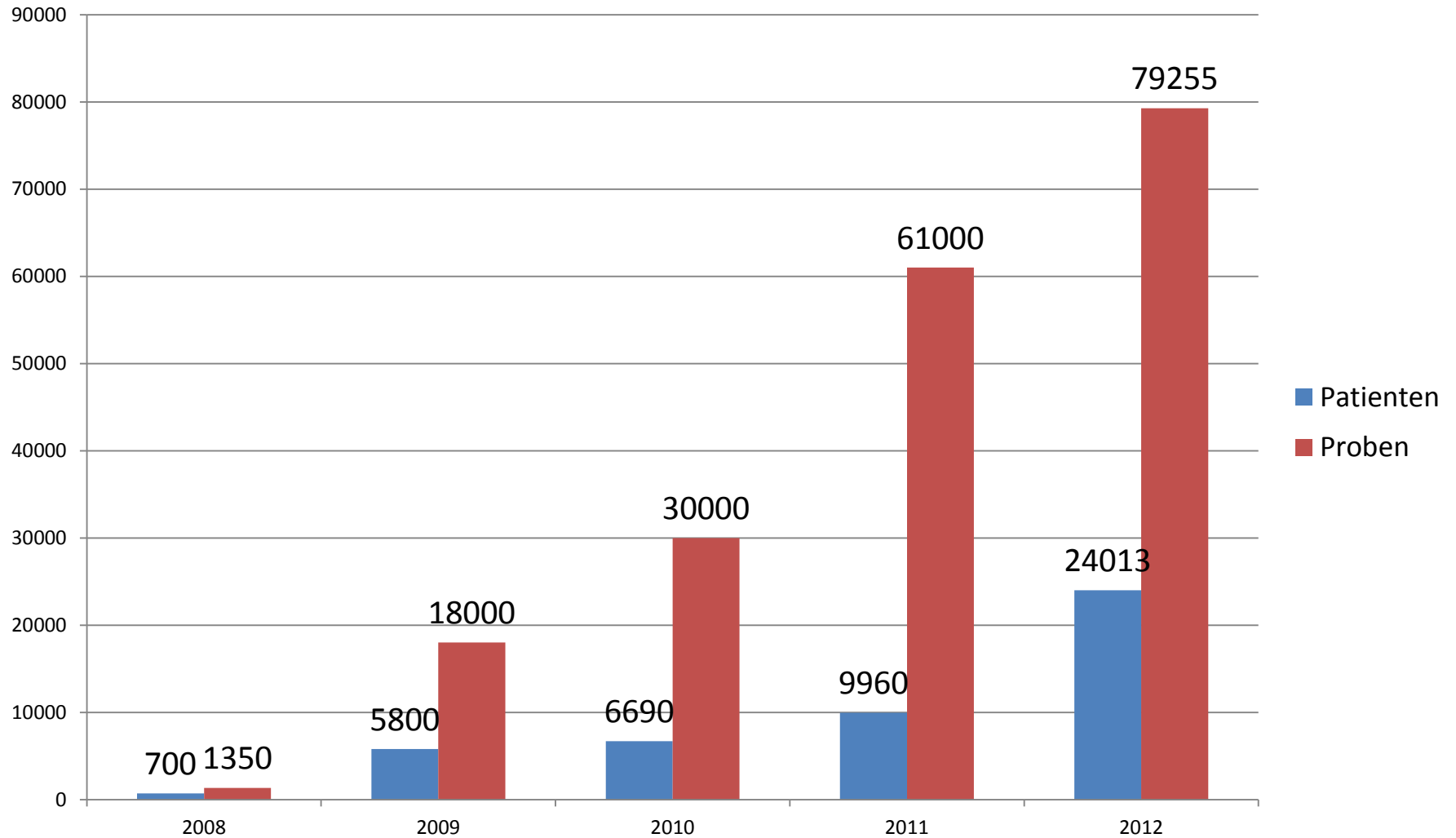
- Study Design
- SOP's
- Equipment
- Cohort Definition
- SOP's
- Material Transfer
- Ethics

5.-7.11.2009

SGPatho 2009

18

Anzahl Patienten und Proben



My Favorite Article 2012



The genomic and transcriptomic architecture of 2,000 breast tumours reveals novel subgroups

Christina Curtis^{1,2}{*, Sohrab P. Shah^{3,4}*, Suet-Feung Chin^{1,2}*, Gulisa Turashvili^{3,4}*, Oscar M. Rueda^{1,2}, Mark J. Dunning², Doug Speed^{2,5}{, Andy G. Lynch^{1,2}, Shamith Samarajiwa^{1,2}, Yinyin Yuan^{1,2}, Stefan Graf^{1,2}, Gavin Ha³, Gholamreza Haffari³, Ali Bashashati³, Roslin Russell², Steven McKinney^{3,4}, METABRIC Group{, Anita Langerød⁶, Andrew Green⁷, Elena Provenzano⁸, Gordon Wishart⁸, Sarah Pinder⁹, **Peter Watson^{3,4,10}**, Florian Markowetz^{1,2}, Leigh Murphy¹⁰, Ian Ellis⁷, Arnie Purushotham^{9,11}, Anne-Lise Børresen-Dale^{6,12}, James D. Brenton^{2,13}, Simon Tavare^{1,2,5,14}, Carlos Caldas^{1,2,8,13} & Samuel Aparicio^{3,4}

¹Department of Oncology, University of Cambridge, Hills Road, Cambridge CB2 2XZ, UK. ²Cancer Research UK, Cambridge Research Institute, Li Ka Shing Centre, Robinson Way, Cambridge CB2 0RE, UK.

³Department of Pathology and Laboratory Medicine, University of British Columbia, Vancouver, British Columbia V6T 2B5, Canada. ⁴Molecular Oncology, British Columbia Cancer Research Centre,

Vancouver, British Columbia V5Z 1L3, Canada. ⁵Department of Applied Mathematics and Theoretical Physics, University of Cambridge, Centre for Mathematical Sciences, Cambridge CB3 0WA, UK.

⁶Department of Genetics, Institute for Cancer Research, Oslo University Hospital Radiumhospitalet, Montebello, 0310 Oslo, Norway.

⁷Department of Histopathology, School of Molecular Medical Sciences,

University of Nottingham, Nottingham NG5 1PB, UK. ⁸Cambridge Breast Unit, Addenbrooke's Hospital, Cambridge University Hospital NHS Foundation Trust and NIHR Cambridge Biomedical Research

Centre, Cambridge CB2 2QQ, UK. ⁹King's College London, Breakthrough Breast Cancer Research Unit, London WC2R 2LS, UK.

¹⁰Manitoba Institute of Cell Biology, University of Manitoba, Manitoba R3E

0V9, Canada. ¹¹NIHR Comprehensive Biomedical Research Centre at Guy's and St Thomas' NHS Foundation Trust and King's College London, London WC2R 2LS, UK. ¹²Institute for Clinical Medicine,

Faculty of Medicine, University of Oslo, 0316 Oslo, Norway. ¹³Cambridge Experimental Cancer Medicine Centre, Cambridge CB2 0RE, UK. ¹⁴Molecular and Computational Biology Program, University of

Southern California, Los Angeles, California 90089, USA. {Present addresses: Department of Preventive Medicine, Keck School of Medicine, University of Southern California, Los Angeles, California 90033,

USA ^{08103, 2012} University College London, Genetics Institute, Wellcome BT, UK (D.S.).

My Favorite Article 2012 II

