



National Day - Germany's way towards excellence in biobanking

Berlin 5th of April 2016



Success Model of Centralizing Biobank-Sites

R. Jahns



SPONSORED BY THE





National Day - Germany's way towards excellence in biobanking

Application for the Funding of cBMBs



cBMB Call: 25.05.2010
Deadline: 15.09.2010



Leitfaden für die Antragsteller zur Förderung einer nationalen Biomaterialbank

Anträge zu Biomaterialbanken sind entsprechend den Vorgaben des Leitfadens (DIN A4, maximal 20-seitig incl. Literaturverzeichnis, in englischer Sprache) zu formulieren. Wenn die Vorgaben des Leitfadens nicht entsprechen, können nicht berücksichtigt werden. Ihre Vorhabensbeschreibung benutzen Sie bitte die Formatvorlage BMBF bzw. des Projektträgers.

Application for the Funding of a Centralised Biomaterialbank (cBMB)

Please prepare your application in English **not exceeding 20 pages for the headings 1. to 12.**, including a maximum of 1 page of references (DIN A4, at least 11 point Arial). Structure your application using the headings listed below. Make an entry (n.a. = not applicable, if appropriate) under **every heading** and a comment to **every sub-heading** (bullet point).

Note: Applications that fail to comply with these requirements will be considered incomplete and will be rejected without peer review.

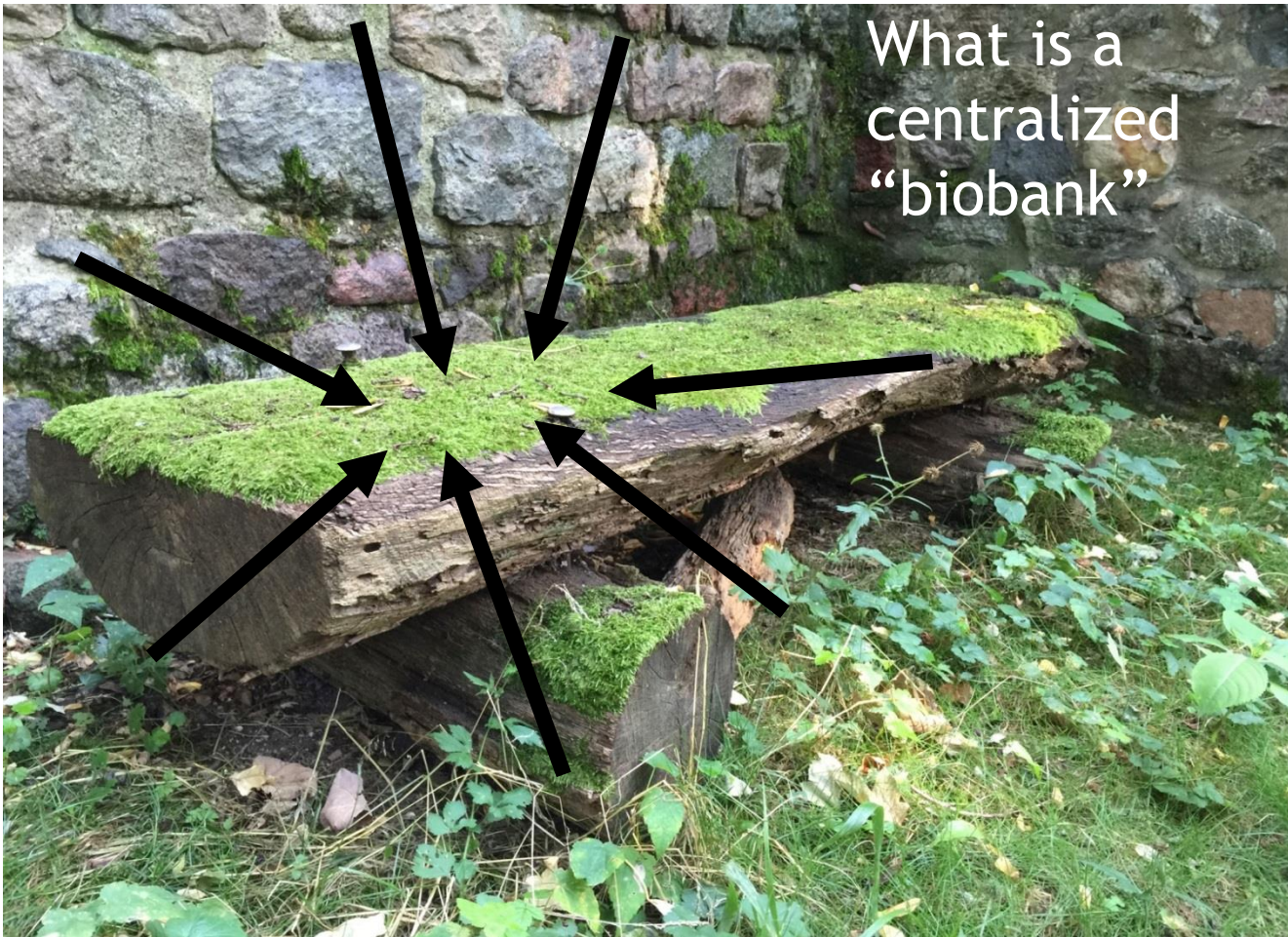
1. BIOMATERIALBANK SYNOPSIS

| APPLICANT/ COORDINATING INVESTIGATOR ORGANISATION | <i>Please name one person (Name, employment status, institution and department)</i> | | | | | | | | | | | |
|--|---|--|--|-----------------|----------------------------------|--|--|--|--|--|--|--|
| ORGANISATION | <i>Please mention the name of the institution presenting this application (hosting institution).</i> | | | | | | | | | | | |
| TITLE | <i>The title of the project (not exceeding 140 characters) should be as precise as possible.</i> | | | | | | | | | | | |
| BIOBANKS TO BE INCORPORATED | <i>Example:</i> <table border="1"> <thead> <tr> <th>Name of Biobank</th> <th>Biobank Operator and Affiliation</th> <th>Contribution besides Samples (if applicable)</th> </tr> </thead> <tbody> <tr> <td> </td> <td> </td> <td> </td> </tr> <tr> <td> </td> <td> </td> <td> </td> </tr> </tbody> </table> <p><i>(Only list BMBs to be included in your cBMB and fulfilling ALL of the following criteria: international publications in peer reviewed journals, national/international grant acquisition including material/data to third parties AND documented quality assurance, for details see appendix C)</i></p> | | | Name of Biobank | Biobank Operator and Affiliation | Contribution besides Samples (if applicable) | | | | | | |
| Name of Biobank | Biobank Operator and Affiliation | Contribution besides Samples (if applicable) | | | | | | | | | | |
| | | | | | | | | | | | | |
| | | | | | | | | | | | | |
| ADDITIONAL MAJOR PARTICIPANTS | <i>Example:</i> <table border="1"> <thead> <tr> <th>Name</th> <th>Affiliation</th> <th>Contribution/ Role</th> </tr> </thead> <tbody> <tr> <td> </td> <td> </td> <td> </td> </tr> <tr> <td> </td> <td> </td> <td> </td> </tr> </tbody> </table> <p><i>(List participants e.g. persons responsible for data protection concept, central IT infrastructure or already established centralised databases NOT all persons involved in the cBMB concept)</i></p> | | | Name | Affiliation | Contribution/ Role | | | | | | |
| Name | Affiliation | Contribution/ Role | | | | | | | | | | |
| | | | | | | | | | | | | |
| | | | | | | | | | | | | |



SPONSORED BY THE





© W. Lesch

SPONSORED BY THE



Federal Ministry
of Education
and Research





National Day - Germany's way
towards excellence in biobanking

Challenges for centralized Biomaterialbanks



1. To perform and prioritize systematic collection of biomaterials in accordance with site-specific **research interests and programs** (including pre-existing BM/data-collections);



SPONSORED BY THE



Federal Ministry
of Education
and Research





National Day - Germany's way towards excellence in biobanking

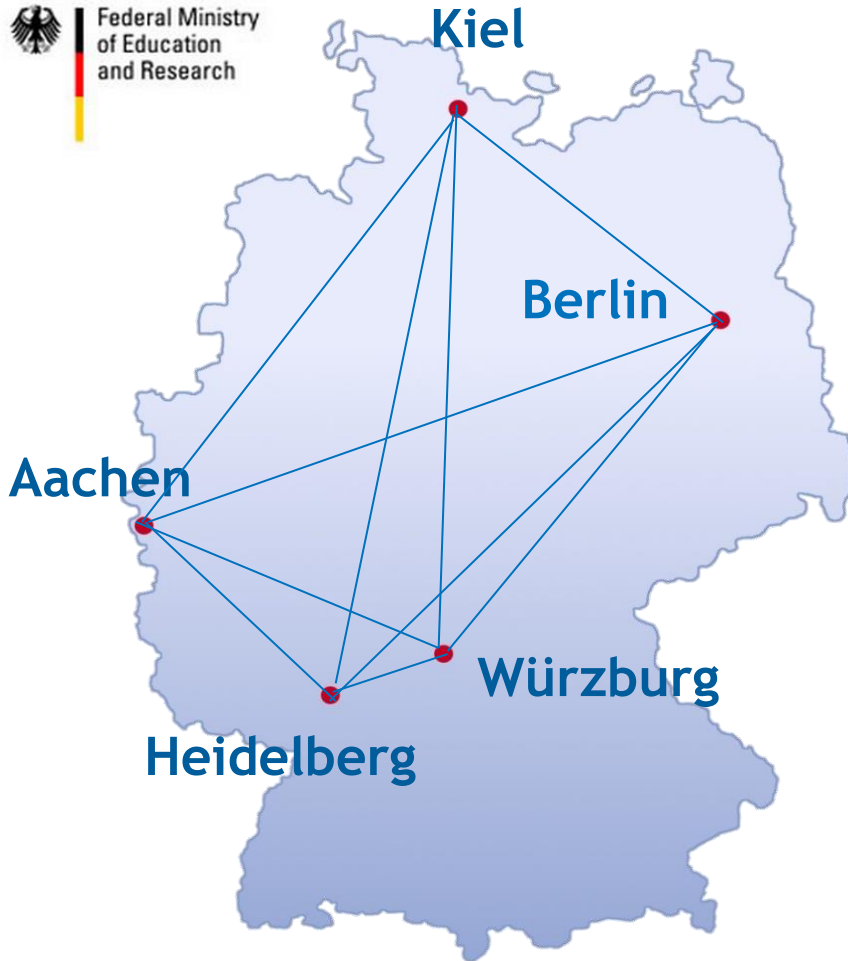
Success Model of Centralizing Biobank-Sites



SPONSORED BY THE



Federal Ministry of Education and Research



Germany concentrates national biobanks at five different sites

hochqualitativer, einheitlich charakterisierter Proben für die Biomarkerforschung bereitzustellen.



Tanks zur Kryolagerung von Biomaterialien bei -140 °C.

Mit einer einzigartigen Initiative beseitigt die Bundesregierung einen entscheidenden Engpass der biomedizinischen Forschung, um

Die neu entstehenden, vernetzten Biobanken könnten sich als wahre Schatzkammern erweisen – nicht nur für die akademische Biomarker-

exklusivität und damit die Patentlaufzeit. Das kommerzielle Risiko ist kleiner und der Vorteil für den Patienten – so hoffen wir – signifikant größer."

Treibstoff für die Biomedizin

Dass das BMBWF mit den für das Leuchtturmprojekt aus 29 Bewerbungen ausgewählten Biobank-Modellstandorten Aachen, Berlin, Heidelberg, Kiel und Würzburg Großes vorhat, wurde auf dem Expertentreffen in den Räumen der TMF – Technologie- und Methodenplattform für die vernetzte medizinische Forschung e.V. deutlich. Nach den Plänen des Ministeriums ist die Initiative nur der Auftakt, um die bisher verstreuten Proben- und Datenressourcen für die patientenorientierte Forschung nutzbar zu machen und später in die geplante europäische Biobankenstruktur BBMRI (vgl. [Itranskript x/20xx](#)) einzubinden. Bis zum Sommer 2012 wird der TMF, der künftig als Kommunikations- und Vernetzungsplattform für die Biobankfor-

Transkript 04/2011, 25-26



SPONSORED BY THE



Federal Ministry of Education and Research





National Day - Germany's way
towards excellence in biobanking

Success Model of Centralizing Biobank-Sites



The centralized Biomaterialbank of the RWTH Aachen (RWTH cBMB)



SPONSORED BY THE



Federal Ministry of
Education
and Research





National Day - Germany's way towards excellence in biobanking

The centralized Biomaterialbank Aachen



- Home
- Biomaterials
- Patient Information
- Projects
- Organisation
- Publications
- Data Privacy
- Forms
- Contact

You are here: Home

RWTH Centralized Biomaterial Database (RWTH cBMB)

RWTH centralized Biomaterial Bank (RWTH cBMB)

Directors

Medical Director: Prof. Ruth Knüchel-Clarke (MD)

Scientific Director: Prof. Edgar Dahl (PhD)

Welcome to the RWTH cBMB Biobank!

A biobank collects human biomaterial such as blood or residual tissues, which remain after an operation, given by a consensual donor. The collected biomaterial is used for research projects aiming at an enhanced patient care in the near future. This is often described by the term "personalized medicine", meaning that molecular information deriving from the diseased tissue of individual patients is used to select the optimal therapy.

The RWTH cBMB Biobank is the centralized biomaterial bank (cBMB) of the University Hospital RWTH Aachen, a large university hospital that consists of 33 clinics and 25 institutes and additionally headquarters the Medical Faculty of the RWTH, the owner of the biobank. Since 2011, the RWTH cBMB has been supported by the governmental funding agency BMBF, which selected five sites in Germany to set up centralized biomaterial banks (Further information: [here](#)). The focus of RWTH cBMB research projects ranges from oncological over cardiological to neurological diseases, reflecting the strategic research orientation of the Medical Faculty in Aachen.



SPONSORED BY THE





National Day - Germany's way
towards excellence in biobanking

The centralized Biomaterialbank Aachen



The RWTH cBMB unifies 10 Biomaterial Banks
of the University Hospital Aachen



Institute of Pathology

1. [ECCA Tumorbank](#)
Prof. Ruth Knüchel-Clarke (Pathology)
2. [UKA Liver Disease Biobank](#)
Prof. Christian Trautwein (Med. Clinic III)
3. [UKA Renal Disease Biobank](#)
Prof. Jürgen Floege (Med. Clinic II)
4. [UKA Cardiovascular Disease Biobank](#)
Prof. Nikolaus Marx (Med. Clinic I)
5. [UKA Sepsis Biobank](#)
Prof. Gernot Marx (Dep. Intensive Care)
6. [UKA Implant/Explant Biobank](#)
Prof. Ulf Peter Neumann (Surgery)
7. [UKA Occupational Medicine Biobank](#)
Prof. Thomas Kraus (Occupational Medicine)
8. [UKA Human Genetics Biobank](#)
Prof. Klaus Zerres (Human Genetics)
9. [UKA Neuromuscular Disease Biobank](#)
Prof. Joachim Weis (Neuropathology)
10. [UKA Hematologic disease Biobank](#)
Prof. Tim Brümmendorf (Med. Clinic IV)



SPONSORED BY THE



Federal Ministry
of Education
and Research





National Day - Germany's way towards excellence in biobanking

The centralized Biomaterialbank Aachen



| | | | |
|------|--------------|---------------------|----------|
| Home | Biomaterials | Patient Information | Projects |
|------|--------------|---------------------|----------|

You are here: Home / Organisation / Team

Team



Univ.-Prof. Dr. med. Ruth Knüchel-Clarke

Medical Director of the RWTH cBMB



Univ.-Prof. Dr. rer. nat. Edgar Dahl

Scientific Director of the RWTH cBMB



Dr. med. Jörg Jäkel
Biobank Manager
Medical Science



Philipp Hossner
Biobank Manager IT
(acting)



Jennifer Wipperfürth
Biobank Manager
Laboratory



Dr. rer. nat. Cord Spreckelsen
Scientific Advisor IT

| | | | | | | | |
|------|--------------|---------------------|----------|--------------|--------------|--------------|-------|
| Home | Biomaterials | Patient Information | Projects | Organisation | Publications | Data Privacy | Forms |
|------|--------------|---------------------|----------|--------------|--------------|--------------|-------|

You are here: Home / Projects

Projects

One of the most important objectives of RWTH cBMB is to be a reliable partner in biomedical research projects involving human biomaterials. To achieve this goal various resources and know-how are provided. For example, the RWTH cBMB will offer its project partners defined standardized protocols for biomaterial pre-processing, which have been extensively tested. We always strive to create the best possible biomaterial contribution for our research partners and are looking forward to support your pioneering research as well!

Biomaterial Storage

RWTH cBMB stores biomaterials in a specially equipped and access-restricted storage area, in which several deep freezers are operated in an alarm-secured mode being connected to the central emergency power system. This guarantees that power is back on in less than a minute after failure. All freezers are further connected with a central alarm system and are therefore subject to constant surveillance. The samples are usually stored at -80 degree, but storage in liquid nitrogen is also possible on request.

Application for biomaterial samples

If you would like to perform an ambitious research project in cooperation with the RWTH cBMB, please send us a meaningful project description as part of the signed Biomaterial Request Form.



SPONSORED BY THE





National Day - Germany's way towards excellence in biobanking

The centralized Biomaterialbank Aachen



| | | | | | | | | |
|------|--------------|---------------------|----------|--------------|--------------|---------------------|-------|---------|
| Home | Biomaterials | Patient Information | Projects | Organisation | Publications | Data Privacy | Forms | Contact |
|------|--------------|---------------------|----------|--------------|--------------|---------------------|-------|---------|

You are here: Home / Data Privacy

Data Privacy

The project "RWTH Aachen centralized Biomaterial Bank (RWTH cBMB)" was reviewed and approved by the Ethics Committee of the Medical Faculty of the RWTH Aachen University. A mandatory prerequisite for incorporation of a biomaterial sample into RWTH cBMB is the written consent of the donor. Before signing, the donor is informed by a medical doctor about the research project and the intended storage of donated samples and associated data. The important contribution of the donor to biomedical research is addressed.

Basic Principles of the Data Security Concept

The data protection strategy of RWTH cBMB is based on the generic data protection concept for biomaterials (de-identification and pseudonymization) and is supported by the German Research Data Protection Network (Research Data Protection Network in Medical Research) is an umbrella organization for collaborative medical research and is supported by developed by an intense process of harmonization and is now widely accepted as standard in Germany.

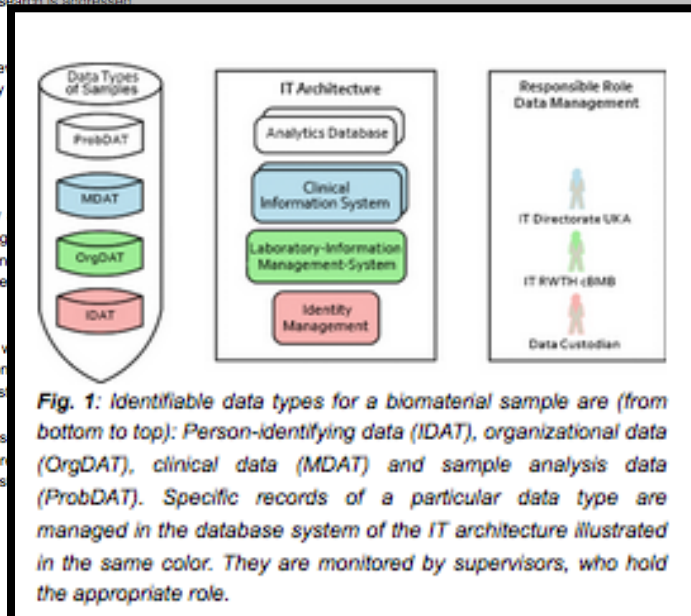
Separation of samples from associated data

A core element of the data protection concept is the definition of four different types of data that are physically separated (see Figure 1), being managed in different database systems and being supervised by different managers. This ensures a high level of protection of personal data. In RWTH cBMB, only pre-analytical biomaterial information are stored. The clinical data remain in various information systems within the IT department of University Hospital Aachen.

Pseudonymization of Data

For the purpose of data protection, person-identifying data are associated with a pseudonym at a very early stage in the chain. A pseudonym is an electronically generated unique string of letters that does not allow a direct inference of the person. From the time the pseudonym has been created, the biomaterial will be addressed only by this "non-speaking" string. Organizational data connected to a biomaterial sample are captured in this way.

If the donor withdraws consent at a later time point, cancellation of the samples associated personal clinical data as well as the data of the biomaterial sample itself will be carried out. To do so, the necessary restoration of the personal reference (de-pseudonymization) can only be carried out by a specifically appointed data trustee. The function of the data trustee is implemented by the Department of Medical Informatics at RWTH Aachen University.



SPONSORED BY THE






National Day - Germany's way towards excellence in biobanking

The centralized Biomaterialbank Aachen





**CENTRALIZED BIOMATERIAL BANK
RWTH AACHEN
UNIVERSITY**

Univ.-Prof. Dr. med. Ruth Knüchel-Clarke
Medical Head of the RWTH cBMB

Univ.-Prof. Dr. rer. nat. Edgar Dahl
Scientific Head of the RWTH cBMB

RWTH centralized Biomaterial Bank (RWTH cBMB)
University Hospital of the RWTH Aachen
Fon: ++49-(0)241-80-88431
Fax: ++49-(0)241-80-82439
Mail: edahl@ukaachen.de

To the:

Scientific Head of the RWTH cBMB
Institute of Pathology
University Hospital of the RWTH Aachen
52074 Aachen, Germany

Application for Biomaterial Samples of the RWTH cBMB

Name of the Applicant: _____

Clinic/ Institute/ Institution: _____

Phone Number/ Mail: _____

| Biomaterial Samples | Quantity |
|---------------------|----------|
| | |
| | |
| | |
| | |
| | |

Title of the Research Project: _____

Project Number (if available): _____

Project Description:

_____ Date of the Application _____ Signature of the Applicant

| Comments | <input type="checkbox"/> Internal <input type="checkbox"/> External |
|----------|---|
| | |

_____ Receipt Biobank Laboratory/ Signature _____ Application Number

Contact Number Biobank Laboratory: ++49-(0)241-80-35260



SPONSORED BY THE





National Day - Germany's way
towards excellence in biobanking

Success Model of Centralizing Biobank-Sites



The centralized Biomaterialbank of the Charité Berlin (ZeBanC)



SPONSORED BY THE



Federal Ministry
of Education
and Research





National Day - Germany's way towards excellence in biobanking

The centralized Biomaterialbank Berlin



CHARITÉ PORTAL | Home



UNIVERSITÄTSMEDIZIN BERLIN

Central Biomaterial Bank Charité



[CURRENT ISSUES](#) | [INFORMATION](#) | [PARTNER](#) | [SERVICE](#) | [CONTACT](#)

[Contact](#) | [Sitemap](#) | [Glossary](#)

Google™

search >

🇬🇧 | [A A A](#) | [RSS-Feed](#)



ZeBanC

INFORMATION

[TEAM](#)

[BMBF FUNDING](#)

[ORGANISATIONAL STRUCTURE](#)

[INFORMATION FOR PATIENTS/DONORS](#)

[TERMS AND CONDITIONS](#)

>> [Home](#) / [Information](#)

Biobank - What is that?

Biobank is the short form of biomaterial bank. But what exactly is a biomaterial bank?

Humane biomaterial banks (short: biobanks) are collections of human body substances (i.e. blood, DNA, urine or tissue) connected with disease specific information. This allow for research of relations between diseases and underlying (molecular) modifications and paves the way for developing target-oriented therapies ("personalized medicine").

The biobank material arises from samples taken for therapeutical or diagnostic reasons or is extracted in the context of clinical trials. An approval for usage by the patient is always needed prior to any research activities.



Contact

[ZeBanC](#)
t: +49 30 450 636275 | 450 636377 | 8445 4793 | 8445 3074

GEFÖRDERT VOM



Bundesministerium für Bildung und Forschung

Objectives of the Central Biomaterial Bank of the Charité

At Europe's largest university hospital (Charité - Universitätsmedizin Berlin) a central biobank (ZeBanC) is being developed in the context of the [ZeBanC](#) project. It is supposed to serve as an infrastructure for researchers inside as well as outside the Charité.

The connection of already existing Charité biobanks will generate a large sample collection of various biomaterials and corresponding data. It will be growing constantly by a prospective collection following standardized procedures at the three Charité campuses.

A vote from the ethics committee, the development of a considerable data security concept as well as predefined processes for third party material and data distribution will build a solid basis for a biobank operation with due regard of patient's rights. The decision on distributing samples and data will be made by an advisory board including members from different Charité departments.

SPONSORED BY THE



Federal Ministry of Education and Research

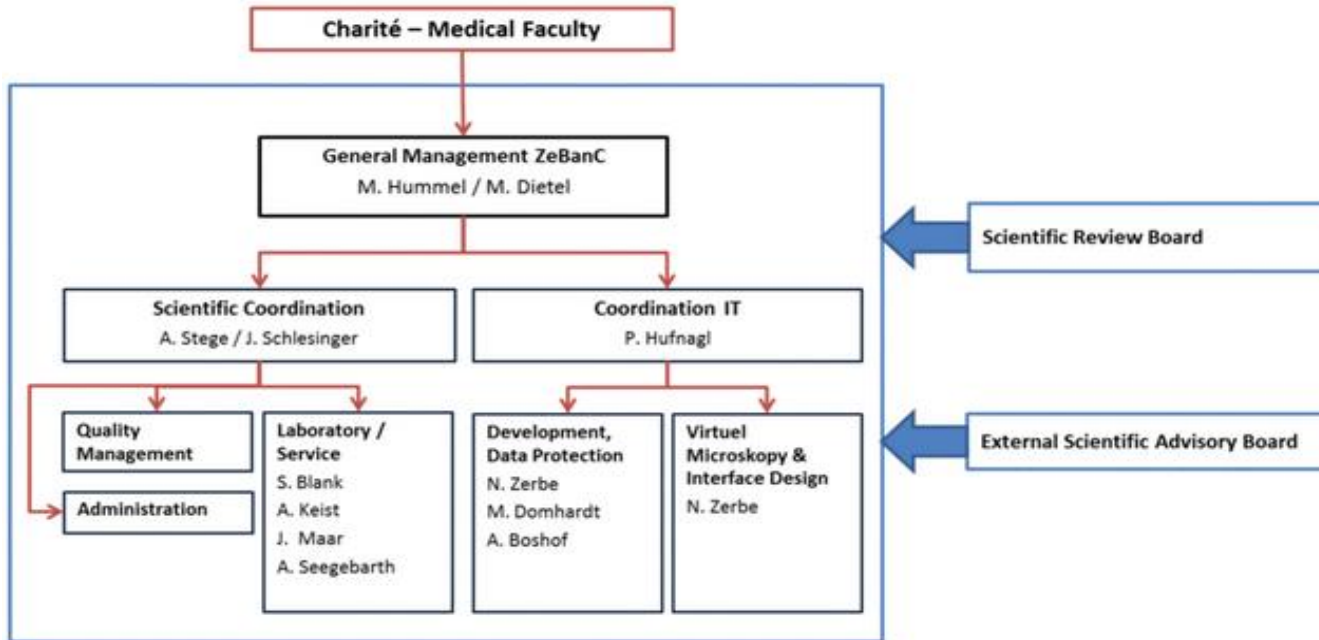


11.04.2016



National Day - Germany's way towards excellence in biobanking

The centralized Biomaterialbank Berlin



ZeBanC

SPONSORED BY THE



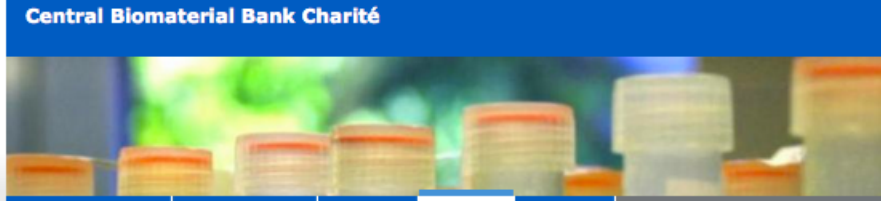
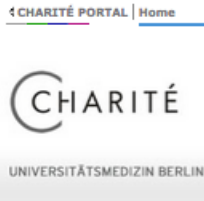
Federal Ministry of Education and Research





National Day - Germany's way towards excellence in biobanking

The centralized Biomaterialbank Berlin



Contact | Sitemap | Glossary

Google™ search ▶

UK | A A A | RSS-Feed

CBF
CC 5

- CURRENT ISSUES
- INFORMATION
- PARTNER
- SERVICE
- CONTACT

>> Home / Service / Project request platform

- SERVICE
- SCOPE OF SERVICES
- CORE FACILITY
- PROJECT REQUEST PLATFORM

Project Request Platform of the ZeBanC / TBB-CCCC

Our Project Request Platform is a central platform for the management and accomplishment of project requests within the ZeBanC and the Tumor and Biobank of the Charité Comprehensive Cancer Center (TBB-CCCC).

To meet the needs of a secure, QM-adequate biobank system and to handle and manage the huge amount of project requests in a standardized way we developed this web application which is public accessible here (currently accessible only for members of the Charité from Intranet):

Project Request Platform of the ZeBanC.

The user can interactively compile personal project requests to acquire or collect biospecimens for the purpose of research. The web application guide the user through specific forms to obtain all project information needed for revision such as kind and purpose of planned project, kind and amount of collection, and desired sample data and services of the corresponding project request.

The registration process for the project request platform was designed simple and secure. First, the interested researcher has to fill out the contact form below. This registration request will be sent by e-mail to the coordinators of the ZeBanC, who check its identity. This will ensure that no unauthorized person gains access to this portal. After that the coordinator registers the person and creates an personal user account. Finally the requestor receives its personal account data as well as the link to the project request portal via e-mail. Henceforth the researcher is able to perform project requests. The created requests are automatically send to the biobank core facility for further processing.

Contact

ZeBanC
+49 30 450 636275 | 450 636377 | 8445 4793 | 8445 3074



Subject* User registration project request platform

Title

Name*

Surname*

Email* @charite.de

Institute*

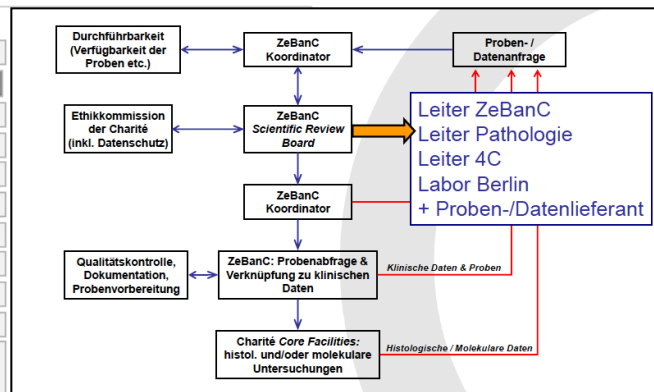
Street, number

Zip code, city

Country

Telephone number*

Your Message Please enter your message



Submit request



ZeBanC

SPONSORED BY THE



11.04.2016



National Day - Germany's way
towards excellence in biobanking

The centralized Biomaterialbank Berlin



ZeBanC

SPONSORED BY THE



Federal Ministry
of Education
and Research



11.04.2016



National Day - Germany's way
towards excellence in biobanking

Success Model of Centralizing Biobank-Sites



The centralized Biomaterialbank of Heidelberg (BMBH)



BMBH
BioMaterialBank Heidelberg

SPONSORED BY THE



Federal Ministry
of Education
and Research

ibdw



National Day - Germany's way towards excellence in biobanking

The centralized Biobank of Heidelberg



28.03.2016 ZUWEISER / BLUTSPENDE / PRESSE & AKTUELLES / STANDORTE / KONTAKT / ÜBERSICHT A-Z / INTERNATIONAL PATIENTS

UniversitätsKlinikum Heidelberg Zentrale Tel.: 06221-560

Pathologie Notfall - Emergency

[Pathologie](#) / [Kooperationen](#) / [BioMaterialBank Heidelberg](#)

Wir über uns

- Organisation
- Informationen für Wissenschaftler
- Informationen für Patienten
- Aktuelles
- Disclaimer

Die BioMaterialBank Heidelberg

REGISTRIERTE BIOBANK

Deutsches Biobanken-Register

Heidelberg ist eines der führenden europäischen Zentren für biomedizinische Forschung, das speziell im Bereich der Krebsforschung eine hohe Dichte an Forschungsinstituten im akademischen und nicht-akademischen Bereich vorzuweisen hat. Dementsprechend hoch ist die Nachfrage nach Biomaterialien zu Forschungszwecken.

BMBH Vorstand Administration

- BioBank Neurobiologie
- NCT-Gewebebank
- GEZEH BioBank
- BioBank Gefäßbiologie
- BMBH Referenzlabor
- DFG Gewebebank
- BioBank Kardiologie
- NCT Liquidbank
- BioBank EPZ

| | |
|----------------------|---------------------|
| Qualitätsmanagement | Informationstechnik |
| Technologieplattform | Trainingsmaßnahmen |

Kernstück und Vorlage für die BMBH ist die Gewebebank des Nationalen Centrums für Tumorerkrankungen (NCT), die seit ihrer Gründung im Jahr 2005 die führende Gewebebank Deutschlands ist und im Pathologischen Institut angesiedelt ist. Hier befindet sich auch die Administration der BMBH, die mit ihrer zentralen Biodatenbank, einem strukturierten Qualitätsmanagement, einer Technologie-plattform und regelmäßigen Weiter-bildungsangeboten das strukturelle Rückgrat der BMBH bildet.

BMBH
BioMaterialBank Heidelberg

Veranstachtungshinweise:

ISBER Annual Meeting | 05 - 08. April 2016 | Berlin

Europe Biobank Week | 13. - 16. September | Wien, Österreich

HandsOn Biobanks | 27. - 29. September | Wien, Österreich

Weitere Informationen unter Aktuelles

gefördert von

Bundesministerium für Bildung und Forschung

[Seitenanfang](#) [Ruprecht-Karls-Universität](#) [Impressum](#) [Intranet](#) [Heidelberg](#)



SPONSORED BY THE





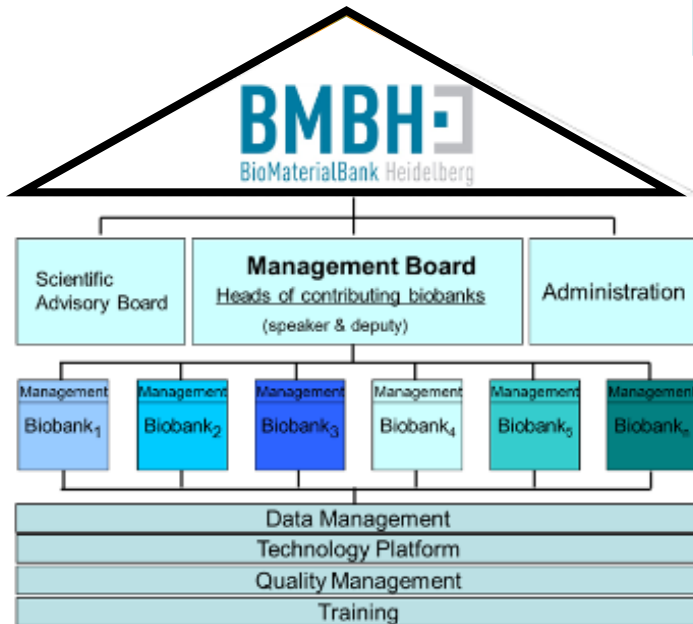
National Day - Germany's way
towards excellence in biobanking

The centralized Biobank of Heidelberg



BioMaterialBank Heidelberg

PI/Co-PI: P. Schirmacher, N. Ulrich
Coordinator: R. Kirsten
IT: C. Döllinger
QM: J. Berger



Cooperations and Outreach

- Competence Networks Health (DZIF, DZL)
- German Consortium for Translational Cancer Research (DKTK)
- TMF working group biobanking (German telematic platform)
- CCC working group tissue banking
- German Biobank Registry



SPONSORED BY THE





National Day - Germany's way towards excellence in biobanking

The centralized Biobank of Heidelberg

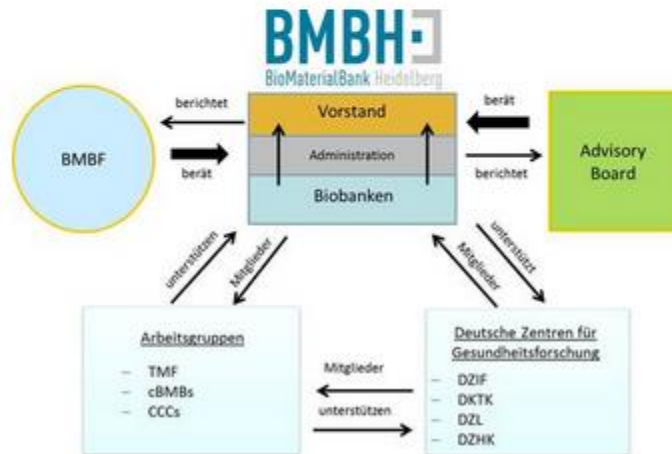


Organization of the BMBH

Die Prozesse der BMBH werden durch den BMBH-Vorstand überwacht, in dem die Leiter der beteiligten Biobanken vertreten sind. Er berichtet jährlich den **Trägerinstitutionen** (Medizinische Fakultät der Universität Heidelberg, Universitätsklinikum und Deutsches Krebsforschungszentrum), dem BMBF und dem **wissenschaftlichen externen Beirat**.

Von Beginn an ist die BMBH Mitglied der Telematikplattform für Informationstechnik und Medizin (TMF) und aktives Mitglied der **AG Biobanken der TMF**. Den Kern dieser Arbeitsgruppe bilden die 5 cBMBs, die in engem Austausch miteinander stehen. Seit 2006 ist die NCT Gewebekbank auch Koordinator der **AG Gewebekbanken der Comprehensive Cancer Centers (CCC)**.

Die BMBH und ihre Mitgliedsbiobanken sind verantwortlich für die Koordination der Biobanken-Plattformen der BMBF-geförderten **Deutschen Zentren für Gesundheitsforschung (DKTK, DZL, DZHK, DZIF)**.



neu -- Newsletter der BMBH -- neu

Hier finden Sie den Newsletter der BMBH, der ab sofort einmal im Quartal erscheinen wird und Sie über laufende Aktivitäten und Neuerungen im Biobanking Bereich sowohl am Standort als auch national und international informieren wird.

↳ Newsletter - 1. Quartal 2016

Tag des Biobanking - 10 Jahre Gewebekbank des NCT

In diesem Jahr beging die Gewebekbank des NCT ihr 10-jähriges Jubiläum, und die BMBH nahm das zum Anlass, um ein kleines Symposium zum Thema Biobanking zu veranstalten. In den einführenden Worten zur aktuellen Entwicklung des NCT am Standort Heidelberg hob Professor Lichter (Mitglied des NCT-Direktoriums) die zentrale Bedeutung der Gewebekbank für die Krebsforschung am Standort hervor. Anschließend hielt die Leiterin der Gewebekbank, PD Dr. Herpel Rückschau auf deren Erfolgsgeschichte seit 2005 und präsentierte gleichzeitig Ideen für die nachhaltige Zukunft des Biobankings am Standort Heidelberg. Anschließend stellte Professor Hummel von der Charité Berlin die Aktivitäten zur internationalen Vernetzung im Rahmen von BBMRI vor, und Professor Jahns von der Biobank Würzburg (ibdW) sprach über die öffentliche Wahrnehmung des Biobankings. Unter dem zahlreich erschienenen Gästen waren neben lokalen Kooperationspartnern auch Vertreter des Projektträgers (DLR) und der Partnerbiobanken der BMBH. Nach einer gesprächs- und diskussionsfreundigen gemeinsamen Mittagspause fand am Nachmittag in geschlossener Runde die 3. Advisory Board Sitzung der BMBH statt. Hier wurde das Engagement der BMBH-Administration für den Aufbau einer zentralisierten Forschungsinfrastruktur in Zusammenarbeit mit den Partnerbiobanken durch die Mitglieder des Advisory Boards sehr positiv hervorgehoben.

↳ Hier finden Sie weitere Informationen



PD Dr. Esther Herpel - 10 Jahre Gewebekbank des NCT



Professor Dr. Roland Jahns von der ibdW in Würzburg



SPONSORED BY THE





National Day - Germany's way towards excellence in biobanking

The centralized Biobank of Heidelberg



Anforderungsbogen für Biomaterialien

Anforderungsbogen bitte am PC ausfüllen, ausdrucken und unterschrieben an die Leitung der BMBH (info@biobank-heidelberg.de) oder die Leitung der Teilbiobank (Adressen siehe www.biobank-heidelberg.de) senden.



Sekretariat der BMBH: Nina Telesch
nina.telesch@med.uni-heidelberg.de
Tel.: 06221-56-35215

mit * markierte Felder sind Pflichtfelder

| | |
|---|---|
| Anforderung bitte auswählen und unter "Anzahl und Art der Proben" spezifizieren | Anzahl und Art der Proben |
| <input type="radio"/> Gewebeproben/-schnitte <input type="radio"/> Liquidproben <input type="radio"/> Derivate (DNA, RNA, Protein, TMA, Zellen,...) | |
| Projekt (Titel, Kurzbeschreibung, ggf. gesondert beifügen) * | |
| | |
| Ethikvotum vorhanden * | |
| Titel: <input style="width: 100%;" type="text"/> | |
| Nr.: <input style="width: 40%;" type="text"/> Nein <input type="checkbox"/> | |
| Institution/Klinik + Abteilung/Arbeitsgruppe + Projektleiter * | |
| | |
| Titel + Name: <input style="width: 30%;" type="text"/> Tel.: <input style="width: 20%;" type="text"/> Datum: <input style="width: 20%;" type="text"/> | |
| eMail: <input style="width: 40%;" type="text"/> Unterschrift: <input style="width: 40%;" type="text"/> | |
| Der untere Teil wird von der Teilbiobank der BMBH ausgefüllt. | |
| Antragsnummer: | Projektnummer: |
| Genehmigung | Name: <input style="width: 40%;" type="text"/> Datum Genehmigung: <input style="width: 20%;" type="text"/> Unterschrift: <input style="width: 40%;" type="text"/> |
| Kooperationspartner | Klinik/Pathologie: <input style="width: 100%;" type="text"/> |
| Bemerkungen | |



SPONSORED BY THE



Federal Ministry of Education and Research



11.04.2016



National Day - Germany's way towards excellence in biobanking

The centralized Biobank of Heidelberg



Time schedule 07/11 12/11 07/12 01/13 01/14 01/15 01/16



Bestandsermittlung der beteiligten Biobanken und Ermittlung der erforderlichen Metadaten

Konfiguration und Aufbau: STARLIMS-, Datenbank- und Pseudonymisierungsserver

Testbetrieb mit NCT-Gewebebank, Anbindung der Barcode-Scanner

schrittweiser Übergang in vollen Produktivbetrieb

Integration weiterer Biobanken:
NCT-Liquid Bank, Thoraxklinik,
GEZEH, HCCB, Vaskuläre
Biobank, HNO-Biobank,
Orthopäd. Biobank



SPONSORED BY THE



Federal Ministry of Education and Research





National Day - Germany's way
towards excellence in biobanking

Success Model of Centralizing Biobank-Sites



The centralized Biomaterialbank of the Medical Campus Kiel - P2N BMB (PopGen 2.0 Network)



SPONSORED BY THE



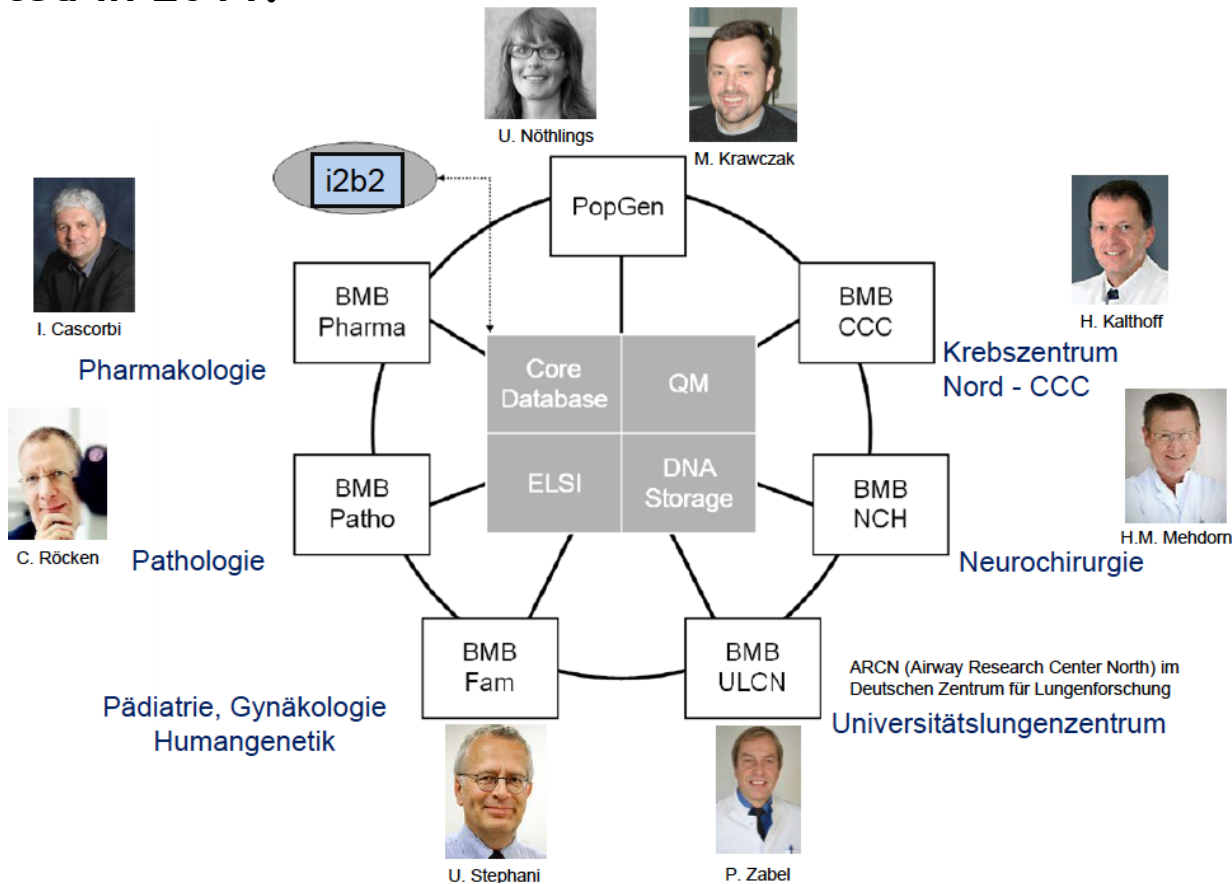


National Day - Germany's way towards excellence in biobanking

The centralized Biomaterialbank Kiel (P2N)



Started in 2011:



SPONSORED BY THE





National Day - Germany's way towards excellence in biobanking

The centralized Biomaterialbank Kiel (P2N)



P2N Today:

Wir über uns
 Infos für Patienten und (mögliche) Spender
 Information for Researchers
 Veranstaltungen
 Presse und Aktuelles
 Angebot und Antragstellung



Universität Kiel



Herzlich Willkommen beim "PopGen 2.0 Netzwerk (P2N)"!



Das PopGen 2.0 Netzwerk (P2N) ist ein Zusammenschluss wissenschaftlicher „Biobanken“ am Kieler Campus des Universitätsklinikums Schleswig-Holstein (UKSH) und am Forschungszentrum Borstel (gemeinsam mit der Lungenklinik Großhansdorf und einigen Kliniken des UKSH Campus Lübeck). Unter „Biobank“ verstehen Wissenschaftler eine Sammlung von Biomaterialien, die in Kombination mit den zugehörigen medizinischen Daten für die Forschung aufbewahrt und genutzt werden.

Gemeinsam mit vier ähnlichen Netzwerken in Aachen, Berlin, Heidelberg und Würzburg wird P2N bis 2016 vom Bundesministerium für Bildung und Forschung (BMBF) finanziell gefördert. Ziel aller fünf Standorte ist die Optimierung des Betriebs und der Nutzung ihrer lokalen Biobanken.

Auf diesen Internetseiten informieren wir Sie über P2N, über die an P2N beteiligten Partner-Biobanken und über die wissenschaftliche Arbeit, die mit den Biomaterialien in P2N geleistet wird.

Vielen Dank für Ihr Interesse.

Ihr P2N-Team



Häufig gestellte Fragen

Haben Sie eine Frage? Vielleicht haben wir sie schon beantwortet!



Information for Researchers

Some research specific FAQs in English!



Presse und Aktuelles

Neuigkeiten von uns und unseren Partnerbiobanken



An wen wende ich mich?

Möchten Sie mit dem P2N Team Kontakt aufnehmen?



SPONSORED BY THE



Federal Ministry of Education and Research



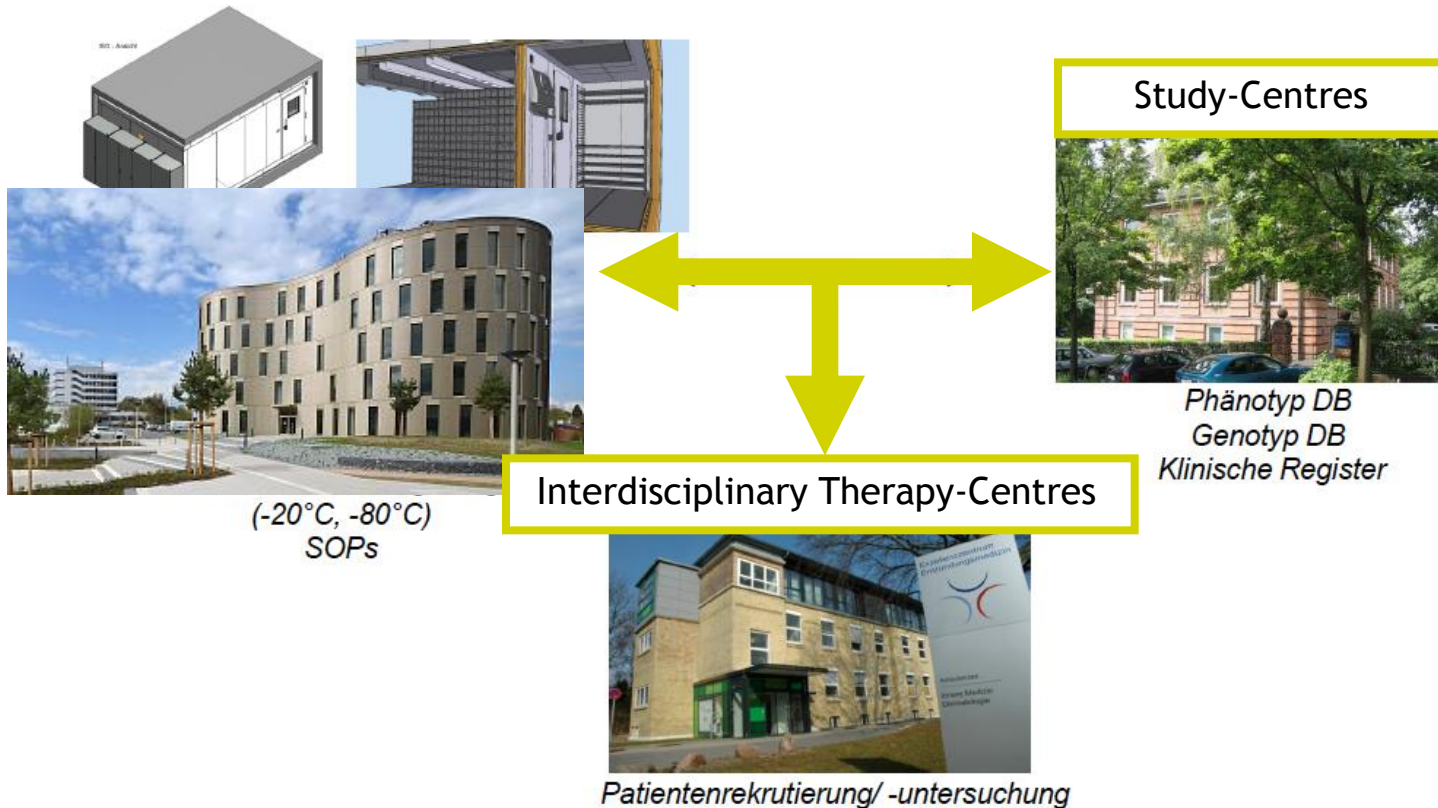


National Day - Germany's way
towards excellence in biobanking

The centralized Biomaterialbank Kiel (P2N)



P2N-Infrastructure



SPONSORED BY THE





National Day - Germany's way towards excellence in biobanking

The centralized Biomaterialbank Kiel (P2N)



Wir über uns

Infos für Patienten und (mögliche) Spender

Information for Researchers

• Material Data Access Form

Veranstaltungen

Presse und Aktuelles

Angebot und Antragstellung



Universität Kiel



Information for Researchers

1. How can I access data or samples in P2N?
2. Will I be allowed access for purposes other than health-related research?
3. What happens if I make financial profit from using data or samples from P2N?
4. What does it cost me to use the P2N resource?
5. Can commercial research organizations use P2N?
6. How is the donor information in P2N kept safe?
7. Who is in charge of P2N?
8. Which diseases are represented in P2N biobanks?
9. Who owns the samples in P2N?
10. How can I get additional phenotypic information on P2N samples?
11. Will I be able to get samples from family members of a donor depending on my research findings?

1. How can I access data or samples in P2N?

If you are interested in the use of data or samples from a P2N biobank, you are required to formally apply for access via the P2N executive board. In the P2N request form, you must describe the planned use of the data or samples in sufficient detail for the P2N supervisory board to be able to judge the quality and success prospects of your project. Please note that, under pending professional regulations for medical doctors in Germany, and following the principles of good scientific practice, you have to search approval of your planned research by an institutional review board (IRB) in advance. No access will be granted to any data or samples in P2N without documented IRB approval.



SPONSORED BY THE

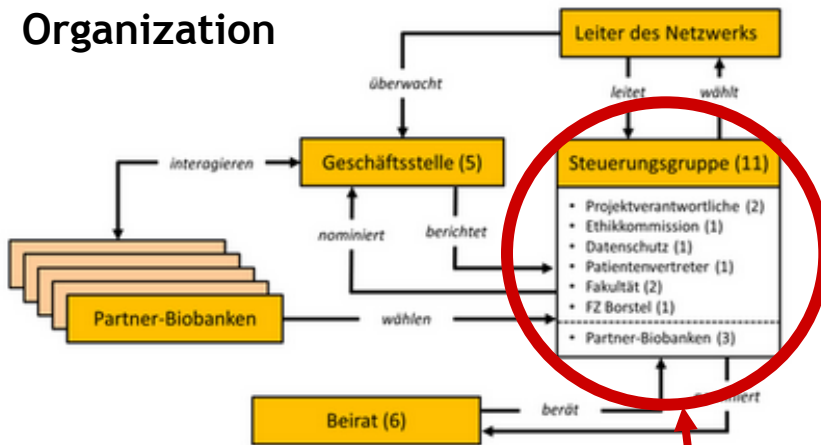


Federal Ministry of Education and Research

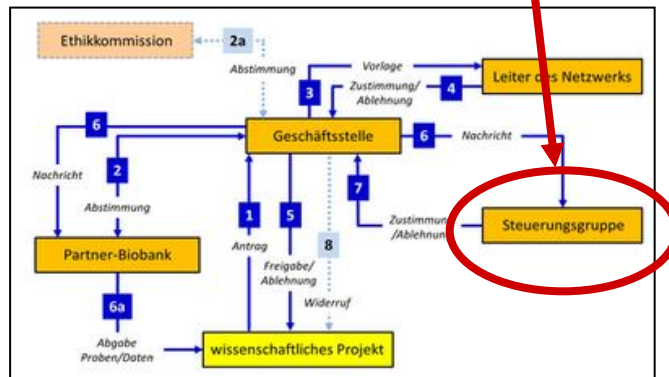




Organization



Access-regulations (data/biosamples)



P2N Management Office
c/o Institute of Epidemiology
Christian-Albrechts University of Kiel
Niemannsweg 11
D- 24105 Kiel
Germany
FAX: +49 431 597 3730
email: transfer@p2n-sh.de

| | | |
|---|--|--|
| PROJECT SPECIFICATION | | P2N ref. no. _____ / _____ <small>(to be filled in by administration)</small> |
| BIOMATERIAL AND DATA ACCESS REQUEST FORM | | |
| 1. | Access Requested (please tick) Biomaterial <input type="checkbox"/> Data <input type="checkbox"/> | |
| | Application Date: | |
| 2. | Project Title: _____ | |
| 3. | Dispatching Biobank (tentative): _____ | |
| 4. | Patients/Probands (precise description of individuals of whom biomaterials or data are requested) _____ _____ | |
| 5. | Principal Applicant Name: _____ Institution: _____ Address: _____ Email: _____ Phone: _____ Fax: _____ | |
| 6. | Project Schedule Starting Date: Expected Duration: | |



SPONSORED BY THE





National Day - Germany's way
towards excellence in biobanking

Success Model of Centralizing Biobank-Sites



The centralized Biomaterialbank of the Medical Faculty Würzburg (ibdw)



SPONSORED BY THE



Federal Ministry
of Education
and Research



11.04.2016



National Day - Germany's way towards excellence in biobanking

The interdisciplinary bank of biomaterials and data Würzburg (ibdw)



- Welcome Page
- General information
- Facilities

Universitätsklinikum Würzburg

Interdisciplinary Bank of Biomaterials and Data Würzburg



Bank of Biomat... > General Informa...

► Bank of Biomaterials and Data Würzburg (ibdw)

- News
- General Information**
- Legal and Ethical Framework
- Structure of the ibdw
- External Advisory Board
- Aims and Research
- ibdw Main Principles
- FAQ
- Integrated Biomaterial Banks
- Documents
- ibdw in the news
- About us

Welcome to the Interdisciplinary Bank of Biomaterials and Data Würzburg (ibdw)



► General Information

Research involving clinical information analysed in conjunction with human biological or genetic data will be essential to foster improvements in the detection, prevention, diagnosis, and treatment of multi-factorial diseases.

Embedded in the Initiative of the Federal Ministry of Education and Research (BMBF) to build up centralized National Biomaterial Banks, the Interdisciplinary Bank of Biomaterials and Data Würzburg (ibdw) aims to systematically collect liquid (blood/DNA/urine) and solid biomaterials (BM) from patients and study participants of the Medical Campus Würzburg.

[more...](#)

SEARCH

Find

FIND YOUR HOSPITAL

Please select

Datenschutzerklärung

Print PDF

Bookmark Help

Germany United Kingdom

Interdisciplinary Bank of Biomaterials and Data Würzburg (ibdw)
 Office
 Gabriele Hill-Gómez
 Straubmühlweg 2a, Haus A9
 97078 Würzburg
 T: +49 (0)931 201 47001
 F: +49 (0)931 201 647000

ibdw@ukw.de

Welcome Page | General information | Facilities

08.02.2016



SPONSORED BY THE



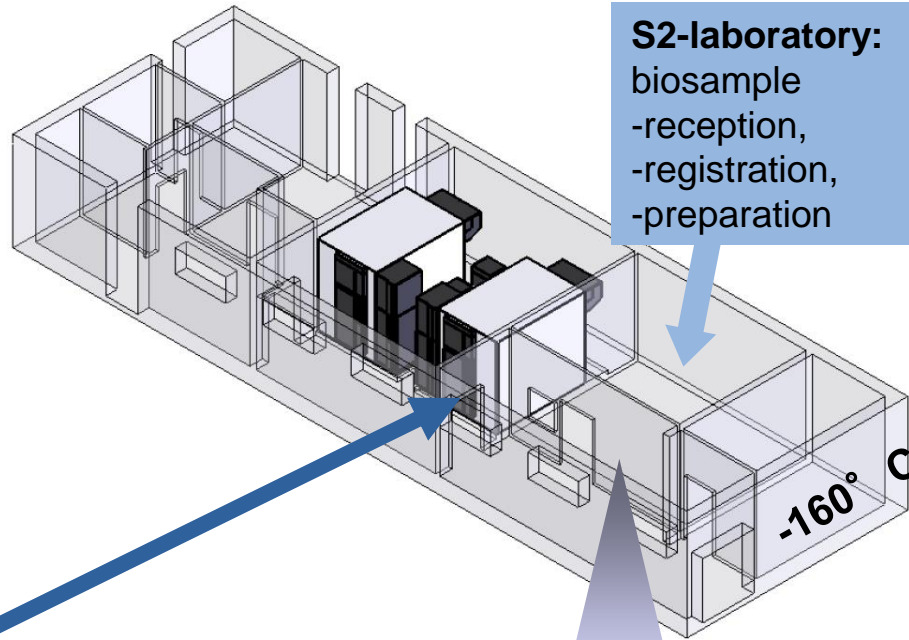


National Day - Germany's way
towards excellence in biobanking

The interdisciplinary bank of biomaterials and data Würzburg (ibdw)



-80° C



S2-laboratory:
biosample
-reception,
-registration,
-preparation



SPONSORED BY THE



Federal Ministry
of Education
and Research





National Day - Germany's way towards excellence in biobanking

The interdisciplinary bank of biomaterials and data Würzburg (ibdw)



- General Information
- Facilities
- Bank of Biomaterials and Data Würzburg (ibdw)
- News
- General Information
- FAQ
- Integrated Biomaterial Banks**
- Documents
- ibdw in the news
- About us

Universitätsklinikum Würzburg

Interdisciplinary Bank of Biomaterials and Data Würzburg



Bank of Biomate... > Integrated Biom...

Integrated Biobanks

| Name of Biobank | Biobank Operator and Affiliation | Contribution besides Samples |
|--|--|---|
| K4P-Biobank | University Hospital, Dept. of Psychiatry | SOP DNA preparation |
| BBCW BrainBankCenter Würzburg (BNE II-Biobank) | University Hospital, Dept. of Psychiatry and Division of Neuropathology | SOP brain tissue preparation, MTA |
| BDUW Biomaterials and Databank of Uro-oncology | University Hospital, Dept. of Urology | Installed work flow tissue exchange, MTA |
| Neuro-Biobank. (Serum/Biopsies) | University Hospital, Dept. of Neurology | Clinical follow-up data sets |
| SCAID-Biobank (skin cancer tissue BB and auto-immune-disease serum BB) | University Hospital, Dept. of Dermatology | SOP skin tissue handling, MTA |
| TC-Biobank Thyroid-Cancer BB, (Sera/Urine) | University Hospital, Dept. of Nuclear Medicine | Clinical follow-up data sets, rare disease |
| WAT-Biobank (Adrenal tissues, sera) | University Hospital, Dept. of Internal Medicine I, Endocrinology | University Hospital, Dept. of Internal Medicine I, Endocrinology |
| 4D-Biobank (PI GCKD Study), | University Hospital, Dept. of Int. Med. I, Nephrology | Data security, SOP, organizational concept |
| Fabry Biobank | University Hospital, Dept. of Int. Med. I, Cardiology & Nephrology | Clinical follow-up data sets, rare disease |
| INH-Biobank | University Hospital, Dept. of Int. Med. I, Cardiology | Basic clinical data set |
| LBB Lymphoma-Biobank Pathology (Tissue/DNA) | University of Würzburg, Institute of Pathology | SOP tissue handling and organization (fresh frozen tissue); cBMB statutes |
| ETICS-Biobank (Sera/Urine/DNA) | University of Würzburg, RVZ/Institute of Pharmacology & Dept. Int.Med. I, Cardiology | SOP BM handling, processing; QM, IT-based storage; OECD conformity |
| GSBB (Sera/GI tissues) | University Hospital, Dept. of General Surgery | SOP-gastrointestinal tumour tissues, clinical follow-up data sets |
| NSBB (Sera/Brain tissue) | University Hospital, Dept. of Neurosurgery | SOP brain tissue collection and handling |

SEARCH

Find

FIND YOUR HOSPITAL

Please select

Datenschutzerklärung

Print PDF

Bookmark Help

Germany UK France

Interdisciplinary Bank of Biomaterials and Data Würzburg (ibdw)
 Office
 Gabriele Hill-Gómez
 Straubmühlweg 2a, Haus A9
 97078 Würzburg
 T: +49 (0)931 201 47001
 F: +49 (0)931 201 647000

ibdw@ukw.de

SPONSORED BY THE



Federal Ministry of Education and Research






The screenshot shows the website for the Interdisciplinary Bank of Biomaterials and Data Würzburg (ibdW). The header includes the university name and the ibdW logo. A navigation menu on the left lists sections like 'Welcome Page', 'General Information', and 'Facilities'. The main content area features a 'Management of the Interdisciplinary Bank of Biomaterials and Data Würzburg' section with five member portraits. A search bar and utility links like 'Print' and 'PDF' are visible on the right.



MATERIAL TRANSFER AGREEMENT

for the distribution of biological materials to non-profit recipients

This agreement is entered into by and between

PROVIDER
University Hospital of Würzburg, public-law institution represented by its medical director organized under the laws of Germany, with its registered offices at Josef-Schneider-Straße 2, 97080 Würzburg, Germany

for

PROVIDING SCIENTIST
Name and Title
Institute
Address

and

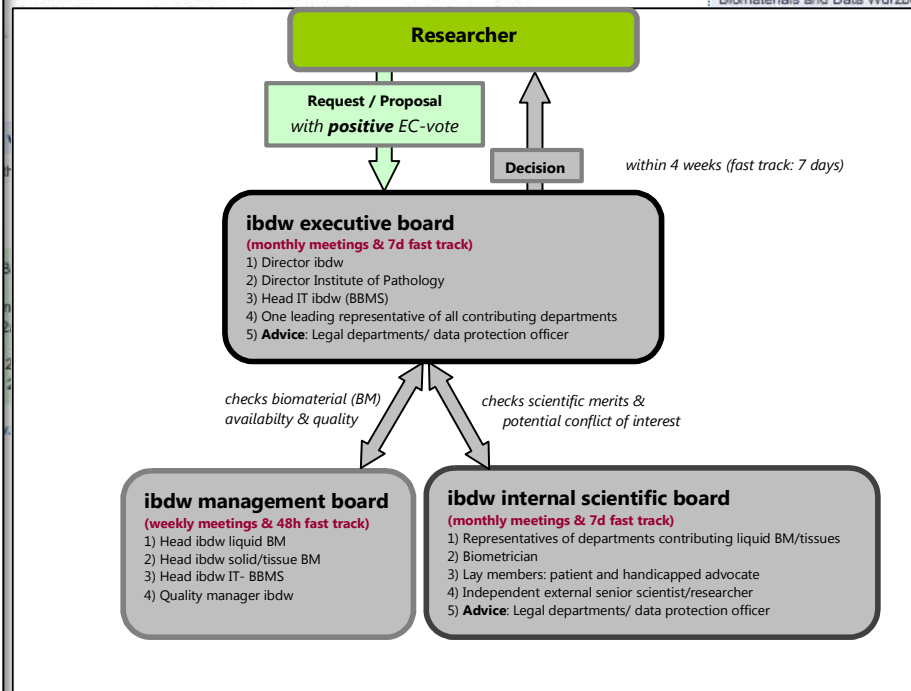
RECIPIENT
Institution
Address

for

RECIPIENT SCIENTIST
Name and Title
Address

1. Definitions:

- ORIGINAL MATERIAL:** The material created by the PROVIDING SCIENTIST, described as follows. A detailed description is attached to this agreement.
- MATERIAL:** ORIGINAL MATERIAL, PROGENY and UNMODIFIED DERIVATIVES. The MATERIAL shall not include: (a) MODIFICATIONS, or (b) other substances created by the RECIPIENT through the use of the MATERIAL which are not MODIFICATIONS, PROGENY, or UNMODIFIED DERIVATIVES.
- PROGENY:** Unmodified descendant from the MATERIAL, such as organism from organism, micro-organism from micro-organism and/or recombinant DNA from recombinant DNA.
- UNMODIFIED DERIVATIVES:** Substances created by the RECIPIENT which constitute an unmodified functional subunit or product expressed by the ORIGINAL MATERIAL. Examples include: cloned/subcloned ORIGINAL MATERIAL, purified or fractionated subsets of the ORIGINAL MATERIAL, and proteins expressed from DNA/RNA supplied by the PROVIDER.
- MODIFICATIONS:** Substances created by the RECIPIENT which contain or incorporate the MATERIAL.
- RESEARCH PROJECT:** The purpose for which the RECIPIENT desires to use the MATERIAL. This purpose is defined as follows. A detailed description is attached to this agreement.





National Day - Germany's way towards excellence in biobanking

The interdisciplinary bank of biomaterials and data Würzburg (ibdW)



- [Welcome Page](#)
- [General information](#)
- [Facilities](#)
-
- [Bank of Biomaterials and Data Würzburg \(ibdW\)](#)
- [News](#)**
- [General Information](#)
- [FAQ](#)
- [Integrated Biomaterial Banks](#)
- [Documents](#)
- [ibdW in the news](#)
- [About us](#)

Universitätsklinikum Würzburg

Interdisciplinary Bank of Biomaterials and Data Würzburg



Bank of Biomate... > News

News

▶ Ibdw-quiz: our winners!

»What are the tasks of a biobank?« The quiz taking place in the intranet of the ukw revolved around the work of the biobank ibdW and found great feedback. More than 600 participants took part in our quiz.

In December our winners were drawn. An iPad Mini goes to Mrs A. Krönert, a coupon of the Restaurant Steinburg was awarded to Mrs. K. Kraus and Mrs S. Christner won a present voucher.

As part of the awards ceremony, our winners took a guided tour through the ibdW

We thank all participants of our contest and congratulate our winners!



▶ Poster prize awarded to ibdW

»How to convey working methods and benefits of biobanks?« This pivotal question of public relations involves an examination of target groups and their specific demands. Patients and donors usually have other need for information as researchers or medical staff.

For his illustration of an integrated information concept for patients, medical staff and researchers Jörg Fuchs (ibdW) was awarded with a poster prize at the 4th National Biobank Symposium.

Congratulations!



SEARCH

Find

FIND YOUR HOSPITAL

Please select ▼

Datenschutzerklärung

Print PDF

Bookmark Help

Interdisciplinary Bank of Biomaterials and Data Würzburg (ibdW)
 Office
 Gabriele Hill-Gómez
 Straubmühlweg 2a, Haus A9
 97078 Würzburg
 T: +49 (0)931 201 47001
 F: +49 (0)931 201 647000

ibdW@ukw.de

SPONSORED BY THE



SPONSORED BY THE





National Day - Germany's way
towards excellence in biobanking

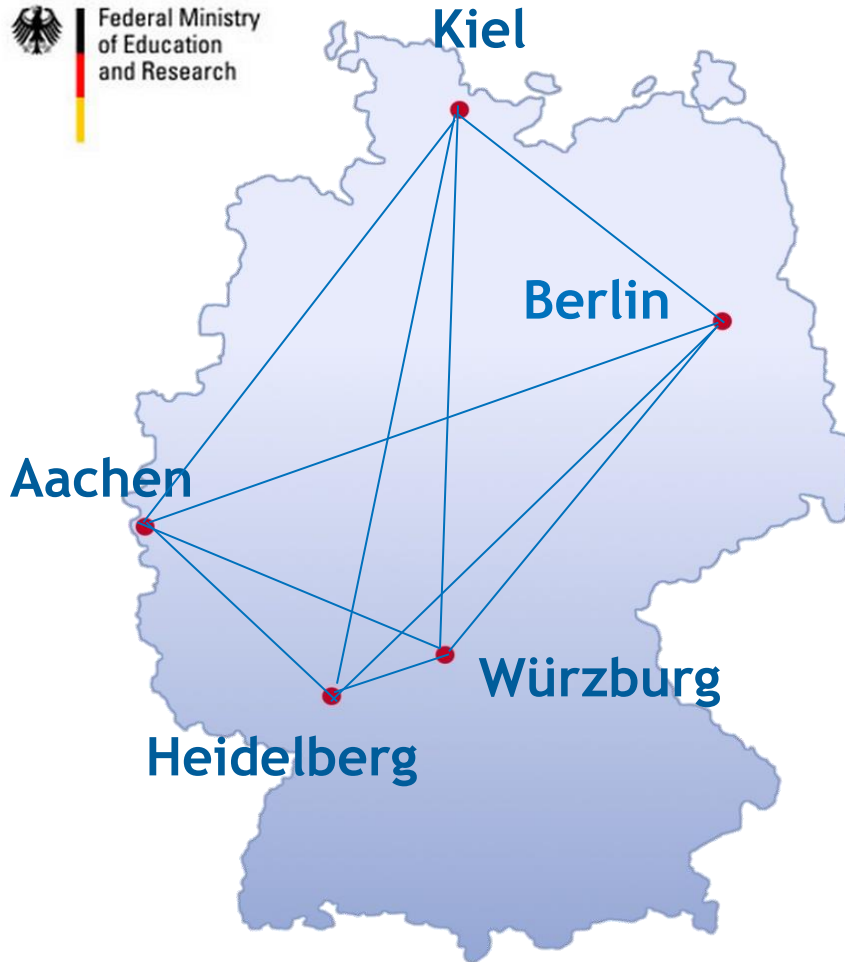
Success Model of Centralizing Biobank-Sites



SPONSORED BY THE



Federal Ministry
of Education
and Research



SPONSORED BY THE



Federal Ministry
of Education
and Research





German Biobank Node GBN
(11/2013-10/2016)



WP1: Headquarter

Berlin (Hummel)
Hannover (Illig)
Göttingen (Nußbeck)

WP2: IT-Network

Erlangen (Prokosch)
Mainz (Ückert)

WP3: QM/QC

liquid: **Jena** (Kiehntopf)
Mannheim (Neumaier)

tissue: **Heidelberg** (Schirmacher)
München (Höfler)

WP4: ELSI/Public

Würzburg (Jahns)

SPONSORED BY THE



Federal Ministry
of Education
and Research





Conclusion:

A lot has been achieved
during the past 5 years;

thanks to the BMBF
funding programs (cBMB/GBN)
German biobanks have reached
international excellence...

However,
a lot remains to do...
...most importantly,
to secure **sustainability** of
the newly & successfully
implanted seedlings !!!



SPONSORED BY THE

