

**Welcome!**



---

2e Salon Européen de la Recherche & de l'Innovation  
Du 8 au 11 juin 2006  
Paris, Porte de Versailles

## **Competence Networks in Medicine– a brief overview**

Anke Schlee, M.A., Munich

- Competence Networks in Medicine
- Competence Network on Depression, Suicidality



## Competence Networks in Medicine

- Funding initiative of the Federal Ministry of Education and Research (BMBF)
- approximately 225 Mio. € (1999-2008)
- 17 disease oriented Competence Networks
- 20 to > 100 participating locations/ institutions per network
- involving all 36 medical faculties/ University clinics
- ~ 250 research projects



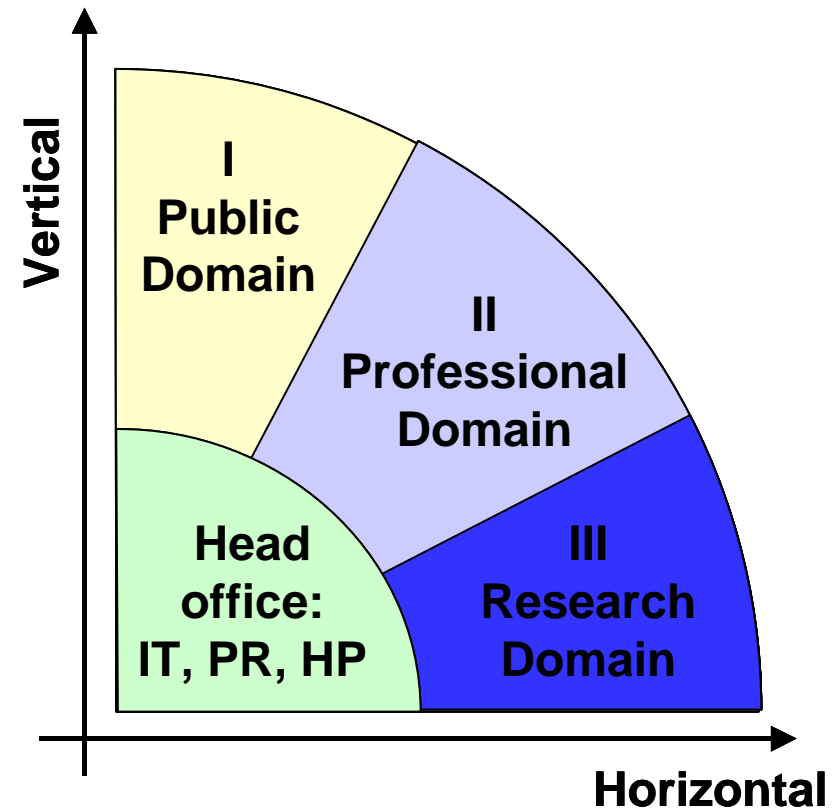
SPONSORED BY THE



Federal Ministry  
of Education  
and Research

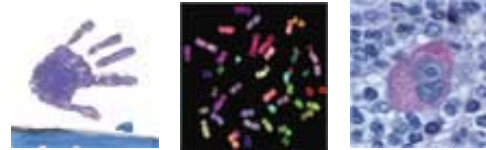
## Networking tasks

- interdisciplinary cooperation of major experts in clinical and basic research (horizontal)
- integration of all important research and health care levels for accelerated knowledge transfer research ↔ practice (vertical)

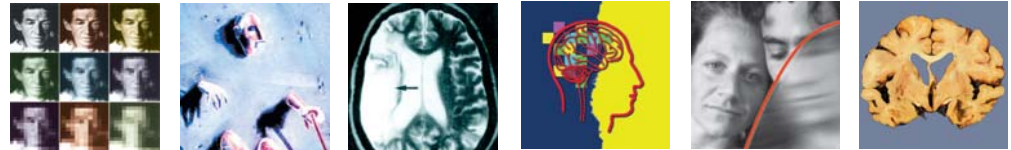


## Disease Areas

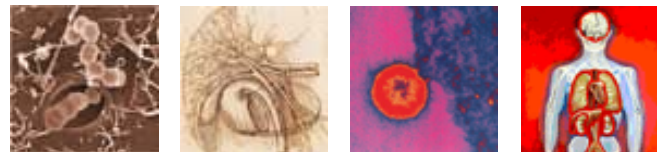
➤ Oncology



➤ Neurology / Psychiatry



➤ Infectious diseases



➤ Heart / Circulation



➤ Chronic Inflammatory Diseases



## Thematic topics / research foci

- Basic clinical research
  - > e.g. molecular diagnostics  
(risk assessment, early recognition, gene variants, therapy prognosis, new targets)
- Patient-oriented research / clinical research
  - > multi-center studies  
(quality assurance, evidence based medicine)
- Health care research
  - > new diagnosis- and therapy standards  
(disease- and system related research questions)

SPONSORED BY THE



Federal Ministry  
of Education  
and Research

## Added Value

- Establishment of registries, data and material banks
- significant enhancement of scientific publications within involved research groups
- international positioning and visibility: Competence Networks as focal points for transnational cooperation  
-> 8 networks with european cooperation
- Availability for patients and physicians (patient seminars, public awareness campaigns, internet)
- Visibility of the Competence Networks by broad range of public relations activities  
-> conferences, events, fairs, publications, press; [www.kompetenznetze-medizin.de](http://www.kompetenznetze-medizin.de)



## Comprehensive collaboration

- close cooperation with coordination centres for clinical studies
- more networks: NGFN, rare diseases
- „Telematikplattform für Medizinische Forschungsnetze e. V.“
  - umbrella organisation as platform for standard procedures and guidelines relating to
    - data protection and security
    - informed patient consent
    - general framework and conditions for biomaterial banks
    - management of clinical studies
    - .....



**Thank you for your attention!**

---

Further information:

↪ [www.kompetenznetze-medizin.de](http://www.kompetenznetze-medizin.de)

↪ [www.tmf-ev.de](http://www.tmf-ev.de)

Anke Schlee

Competence Network on Depression, Suicidality

Klinik für Psychiatrie und Psychotherapie

der Ludwig-Maximilians-Universität München

Anke.Schlee@med.uni-muenchen.de, Tel. 0049-(0)89/ 5160-5553

SPONSORED BY THE



Federal Ministry  
of Education  
and Research